

## LC3B antibody [GT1187]

Cat. No. GTX00949

<b>Host</b>	Rabbit
<b>Clonality</b>	Monoclonal
<b>Isotype</b>	IgG
<b>Applications</b>	WB, ICC/IF, IHC-P
<b>Reactivity</b>	Human, Mouse, Rat

References ( 2 )

Package

100 µl

## Applications

## Application Note

\*Optimal dilutions/concentrations should be determined by the researcher.

Suggested dilution	Recommended dilution
WB	1:500 - 1:2000
ICC/IF	1:50 - 1:200
IHC-P	1:50 - 1:200

Not tested in other applications.

<b>Calculated MW</b>	15 kDa. ( <a href="#">Note</a> )
<b>Observed MW (kDa)</b>	14, 16 kDa. The observed M.W. is based on the following publication. PMID: 31576176

## Properties

<b>Form</b>	Liquid
<b>Buffer</b>	PBS, 0.05% BSA, 50% Glycerol
<b>Preservative</b>	0.05% ProClin 300
<b>Storage</b>	Store as concentrated solution. Centrifuge briefly prior to opening vial. For short-term storage (1-2 weeks), store at 4°C. For long-term storage, aliquot and store at -20°C or below. Avoid multiple freeze-thaw cycles.
<b>Concentration</b>	Batch dependent (Please refer to the vial label for the specific concentration.)
<b>Immunogen</b>	A synthetic peptide of human LC3B.
<b>Purification</b>	Purified by affinity chromatography
<b>Conjugation</b>	Unconjugated



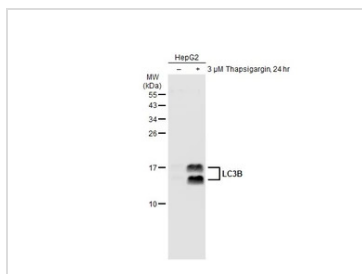
For full product information, images and publications, please visit our [website](#).

For laboratory research use only. Not for any clinical, therapeutic, or diagnostic use in humans or animals. Not for animal or human consumption.

## Note

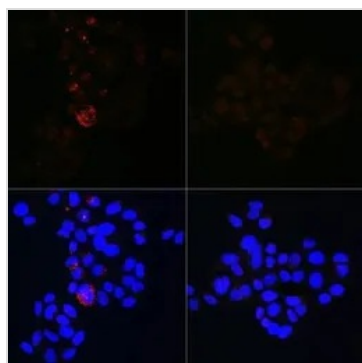
Purchasers shall not, and agree not to enable third parties to, analyze, copy, reverse engineer or otherwise attempt to determine the structure or sequence of the product.

## DATA IMAGES



### GTx00949 WB Image

Untreated (–) and treated (+) HepG2 whole cell extracts (30 μg) were separated by 15% SDS-PAGE, and the membrane was blotted with LC3B antibody [GT1187] (GTx00949) diluted at 1:500. The HRP-conjugated anti-rabbit IgG antibody (GTx213110-01) was used to detect the primary antibody.



### GTx00949 ICC/IF Image

ICC/IF analysis of PFA-fixed HeLa cells with/without Chloroquine (50 μM, 37°C, 20 hrs) treatment using GTx00949 LC3B antibody [GT1187].

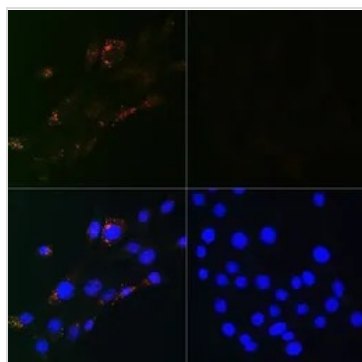
Right : untreated HeLa cells

Left : HeLa cells with 50 μM Chloroquine (20 hrs, 37°C) treatment

Orange : Primary antibody

Blue : DAPI

Dilution : 1:100



### GTx00949 ICC/IF Image

ICC/IF analysis of PFA-fixed NIH-3T3 cells with/without Chloroquine (50 μM, 37°C, 20 hrs) treatment using GTx00949 LC3B antibody [GT1187].

Right : untreated NIH-3T3 cells

Left : NIH-3T3 cells with 50 μM Chloroquine (20 hrs, 37°C) treatment

Orange : Primary antibody

Blue : DAPI

Dilution : 1:100



For full product information, images and publications, please visit our [website](https://www.genetex.com).