

## PIM1 antibody [GT1192]

**Cat. No. GTX00954**

<b>Host</b>	Rabbit
<b>Clonality</b>	Monoclonal
<b>Isotype</b>	IgG
<b>Applications</b>	WB, IHC-P
<b>Reactivity</b>	Human, Mouse, Rat

**Package**  
100 µl

## Applications

**Application Note**

\*Optimal dilutions/concentrations should be determined by the researcher.

Suggested dilution	Recommended dilution
WB	1:500 - 1:2000
IHC-P	1:50 - 1:200

Not tested in other applications.

**Calculated MW** 45 kDa. ([Note](#))

## Properties

<b>Form</b>	Liquid
<b>Buffer</b>	PBS, 50% Glycerol
<b>Preservative</b>	0.02% Sodium azide
<b>Storage</b>	Store as concentrated solution. Centrifuge briefly prior to opening vial. For short-term storage (1-2 weeks), store at 4°C. For long-term storage, aliquot and store at -20°C or below. Avoid multiple freeze-thaw cycles.
<b>Concentration</b>	Batch dependent (Please refer to the vial label for the specific concentration.)
<b>Immunogen</b>	A synthetic peptide corresponding to a sequence within amino acids 110-150 of human PIM1.
<b>Purification</b>	Purified by affinity chromatography
<b>Conjugation</b>	Unconjugated

**Note**

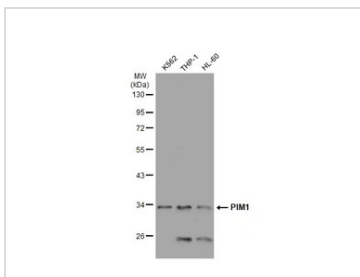
For laboratory research use only. Not for any clinical, therapeutic, or diagnostic use in humans or animals. Not for animal or human consumption.

Purchasers shall not, and agree not to enable third parties to, analyze, copy, reverse engineer or otherwise attempt to determine the structure or sequence of the product.



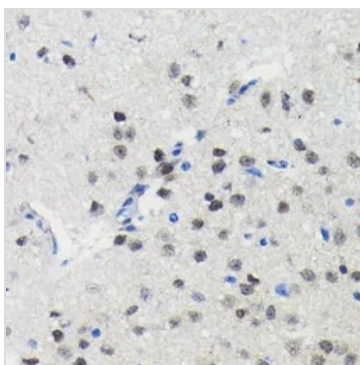
For full product information, images and publications, please visit our [website](#).

## DATA IMAGES

**GTX00954 WB Image**

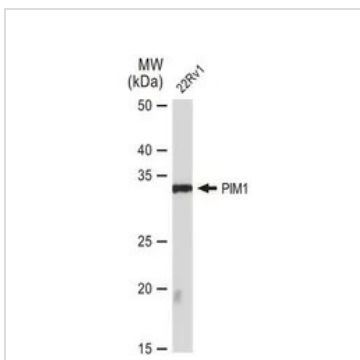
Various whole cell extracts (30 µg) were separated by 10% SDS-PAGE, and the membrane was blotted with PIM1 antibody [GT1192] (GTX00954) diluted at 1:1000. The HRP-conjugated anti-rabbit IgG antibody (GTX213110-01) was used to detect the primary antibody.

The observed M.W. is based on the publication: [PMID: 24040307](https://pubmed.ncbi.nlm.nih.gov/24040307/)

**GTX00954 IHC-P Image**

IHC-P analysis of mouse brain tissue section using GTX00954 PIM1 antibody [GT1192].

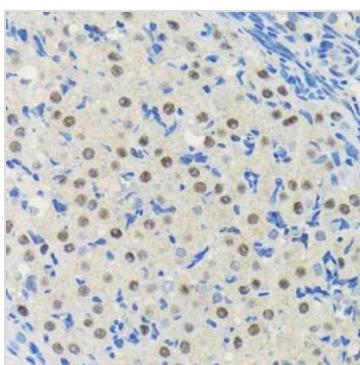
Dilution : 1:100

**GTX00954 WB Image**

WB analysis of 22Rv1 whole cell lysate using GTX00954 PIM1 antibody [GT1192].

Dilution : 1:1000

Loading : 25 µg

**GTX00954 IHC-P Image**

IHC-P analysis of rat ovary tissue section using GTX00954 PIM1 antibody [GT1192].

Dilution : 1:100



For full product information, images and publications, please visit our [website](https://www.genetex.com).