

# IRF3 antibody [GT1194]

**Cat. No. GTX00956**

<b>Host</b>	Rabbit
<b>Clonality</b>	Monoclonal
<b>Isotype</b>	IgG
<b>Applications</b>	WB
<b>Reactivity</b>	Human

**Package**  
100 µl

## Applications

### Application Note

\*Optimal dilutions/concentrations should be determined by the researcher.

Suggested dilution	Recommended dilution
WB	1:500 - 1:2000

Not tested in other applications.

<b>Calculated MW</b>	47 kDa. ( <a href="#">Note</a> )
<b>Observed MW (kDa)</b>	55 kDa. The observed M.W. is based on the following publication. PMID: 30602605

## Properties

<b>Form</b>	Liquid
<b>Buffer</b>	PBS, 50% Glycerol
<b>Preservative</b>	0.02% Sodium azide
<b>Storage</b>	Store as concentrated solution. Centrifuge briefly prior to opening vial. For short-term storage (1-2 weeks), store at 4°C. For long-term storage, aliquot and store at -20°C or below. Avoid multiple freeze-thaw cycles.
<b>Concentration</b>	Batch dependent (Please refer to the vial label for the specific concentration.)
<b>Immunogen</b>	A synthesized peptide derived from human IRF3.
<b>Purification</b>	Purified by affinity chromatography
<b>Conjugation</b>	Unconjugated

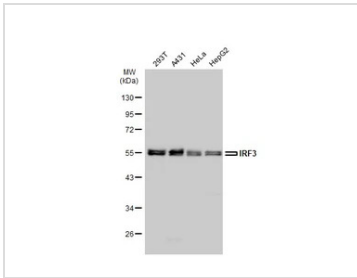
### Note

For laboratory research use only. Not for any clinical, therapeutic, or diagnostic use in humans or animals. Not for animal or human consumption.

Purchasers shall not, and agree not to enable third parties to, analyze, copy, reverse engineer or otherwise attempt to determine the structure or sequence of the product.

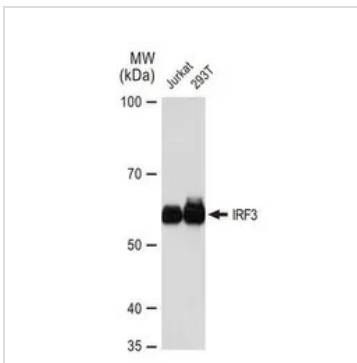


For full product information, images and publications, please visit our [website](#).

**DATA IMAGES**

**GTX00956 WB Image**

Various whole cell extracts (30 µg) were separated by 10% SDS-PAGE, and the membrane was blotted with IRF3 antibody [GT1194] (GTX00956) diluted at 1:500. The HRP-conjugated anti-rabbit IgG antibody (GTX213110-01) was used to detect the primary antibody.

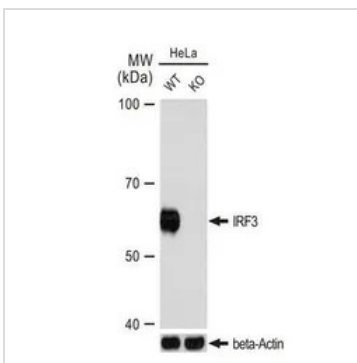
The observed expression level is based on the publication: [PMID: 21347389](https://pubmed.ncbi.nlm.nih.gov/21347389/)


**GTX00956 WB Image**

WB analysis of various samples using GTX00956 IRF3 antibody [GT1194].

Dilution : 1:1000

Laoding : 25µg


**GTX00956 WB Image**

WB analysis of wild-type (WT) and IRF3 knockout (KO) HeLa cell extracts using GTX00956 IRF3 antibody [GT1194].

Dilution : 1:1000

Laoding : 25µg



For full product information, images and publications, please visit our [website](https://www.genetex.com).