

EGFR (phospho Tyr1068) antibody [GT1196]

Cat. No. GTX00958

Host	Rabbit
Clonality	Monoclonal
Isotype	IgG
Application	WB
Reactivity	Human

Package
100 µl

APPLICATION

Application Note

*Optimal dilutions/concentrations should be determined by the researcher.

Suggested dilution	Recommended dilution
WB	1:500 - 1:2000
Not tested in other applications.	

Calculated MW 134 kDa. ([Note](#))

PROPERTIES

Form	Liquid
Buffer	PBS, 50% Glycerol
Preservative	0.02% Sodium azide
Storage	Store as concentrated solution. Centrifuge briefly prior to opening vial. For short-term storage (1-2 weeks), store at 4°C. For long-term storage, aliquot and store at -20°C or below. Avoid multiple freeze-thaw cycles.
Concentration	Batch dependent (Please refer to the vial label for the specific concentration.)
Immunogen	A synthesized peptide derived from human Phospho-EGFR (Y1068).
Purification	Purified by affinity chromatography
Conjugation	Unconjugated

Note

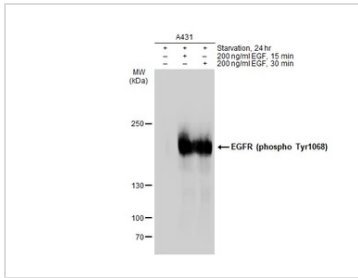
For laboratory research use only. Not for any clinical, therapeutic, or diagnostic use in humans or animals. Not for animal or human consumption.

Purchasers shall not, and agree not to enable third parties to, analyze, copy, reverse engineer or otherwise attempt to determine the structure or sequence of the product.



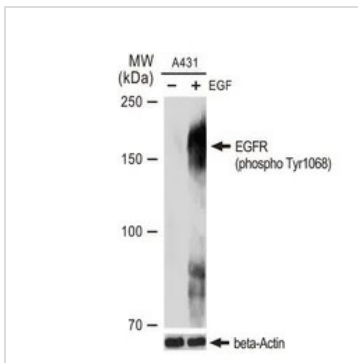
For full product information, images and publications, please visit our [website](#).

DATA IMAGES



GTx00958 WB Image

Untreated (-) and treated (+) A431 whole cell extracts (30 µg) were separated by 5% SDS-PAGE, and the membrane was blotted with EGFR (phospho Tyr1068) antibody [GT1196] (GTx00958) diluted at 1:1000. The HRP-conjugated anti-rabbit IgG antibody (GTx213110-01) was used to detect the primary antibody.



GTx00958 WB Image

WB analysis of A431 cell extracts with/without EGF (100 ng/ml, 37°C, 30 mins) treatment using GTx00958 EGFR (phospho Tyr1068) antibody [GT1196].

Dilution : 1:1000

Loading : 25 µg



For full product information, images and publications, please visit our [website](https://www.genetex.com).