

## STAT1 (phospho Tyr701) antibody [GT1197]

Cat. No. GTX00959

Host	Rabbit
Clonality	Monoclonal
Isotype	IgG
Application	WB
Reactivity	Human, Mouse, Rat

Package  
100 µl

## APPLICATION

## Application Note

\*Optimal dilutions/concentrations should be determined by the researcher.

Suggested dilution	Recommended dilution
WB	1:500 - 1:2000

Not tested in other applications.

Calculated MW 87 kDa. ( [Note](#) )

## PROPERTIES

Form	Liquid
Buffer	PBS, 50% Glycerol
Preservative	0.02% Sodium azide
Storage	Store as concentrated solution. Centrifuge briefly prior to opening vial. For short-term storage (1-2 weeks), store at 4°C. For long-term storage, aliquot and store at -20°C or below. Avoid multiple freeze-thaw cycles.
Concentration	Batch dependent (Please refer to the vial label for the specific concentration.)
Immunogen	A synthesized peptide derived from human STAT1.
Purification	Purified by affinity chromatography
Conjugation	Unconjugated

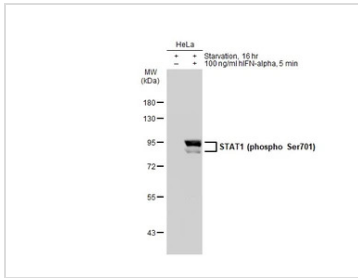
## Note

For laboratory research use only. Not for any clinical, therapeutic, or diagnostic use in humans or animals. Not for animal or human consumption.

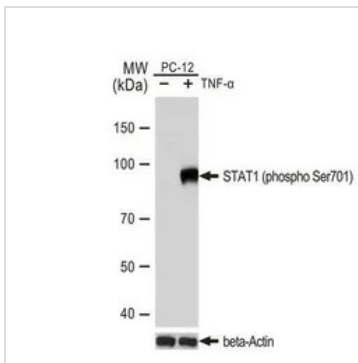
Purchasers shall not, and agree not to enable third parties to, analyze, copy, reverse engineer or otherwise attempt to determine the structure or sequence of the product.



For full product information, images and publications, please visit our [website](#).

**DATA IMAGES**

**GTX00959 WB Image**

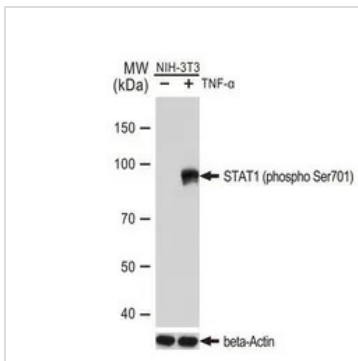
Untreated (–) and treated (+) HeLa whole cell extracts (30 µg) were separated by 7.5% SDS-PAGE, and the membrane was blotted with STAT1 (phospho Ser701) antibody [GT1197] (GTX00959) diluted at 1:500. The HRP-conjugated anti-rabbit IgG antibody (GTX213110-01) was used to detect the primary antibody.


**GTX00959 WB Image**

WB analysis of PC-12 cell extracts with/without TNF-α (20 ng/ml, 37°C, 30 min) treatment using GTX00959 STAT1 (phospho Ser701) antibody [GT1197].

Dilution : 1:1000

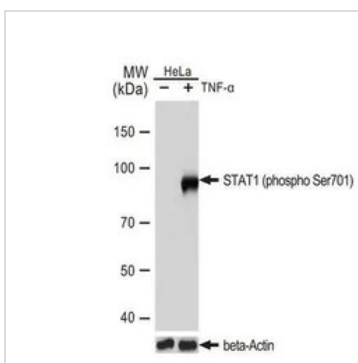
Loading : 25µg


**GTX00959 WB Image**

WB analysis of NIH-3T3 cell extracts with/without TNF-α (20 ng/ml, 37°C, 30 min) treatment using GTX00959 STAT1 (phospho Ser701) antibody [GT1197].

Dilution : 1:1000

Loading : 25µg


**GTX00959 WB Image**

WB analysis of HeLa cell extracts with/without TNF-α (20 ng/ml, 37°C, 30 min) treatment using GTX00959 STAT1 (phospho Ser701) antibody [GT1197].

Dilution : 1:1000

Loading : 25µg



For full product information, images and publications, please visit our [website](https://www.genetex.com).