

SMAD3 (phospho Ser423/Ser425) antibody [GT1207]

Cat. No. GTX00969

Host	Rabbit
Clonality	Monoclonal
Isotype	IgG
Applications	WB, IHC-P
Reactivity	Human, Mouse, Rat

References (5)

★★★★★ Review (1)

Package

100 µl

Applications

Application Note

*Optimal dilutions/concentrations should be determined by the researcher.

Suggested dilution	Recommended dilution
WB	1:500 - 1:2000
IHC-P	1:50 - 1:200

Not tested in other applications.

Calculated MW 48 kDa. ([Note](#))

Properties

Form	Liquid
Buffer	PBS, 50% Glycerol
Preservative	0.02% Sodium azide
Storage	Store as concentrated solution. Centrifuge briefly prior to opening vial. For short-term storage (1-2 weeks), store at 4°C. For long-term storage, aliquot and store at -20°C or below. Avoid multiple freeze-thaw cycles.
Concentration	Batch dependent (Please refer to the vial label for the specific concentration.)
Immunogen	A synthesized peptide derived from human Phospho-Smad3 (S423 + S425).
Purification	Purified by affinity chromatography
Conjugation	Unconjugated

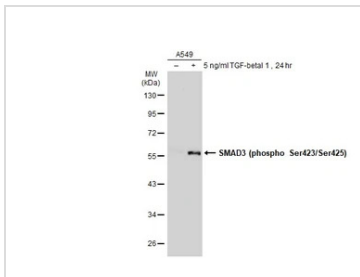
Note

For laboratory research use only. Not for any clinical, therapeutic, or diagnostic use in humans or animals. Not for animal or human consumption.

Purchasers shall not, and agree not to enable third parties to, analyze, copy, reverse engineer or otherwise attempt to determine the structure or sequence of the product.

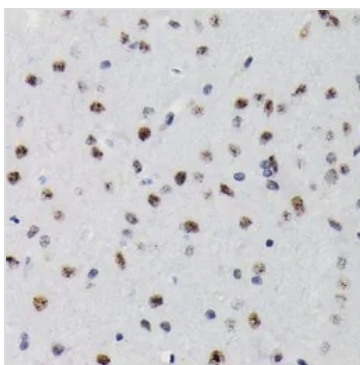
For full product information, images and publications, please visit our [website](#).

DATA IMAGES



GTx00969 WB Image

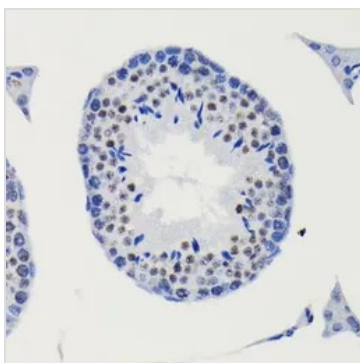
Untreated (–) and treated (+) A549 whole cell extracts (30 µg) were separated by 10% SDS-PAGE, and the membrane was blotted with SMAD3 (phospho Ser423/Ser425) antibody [GT1207] (GTx00969) diluted at 1:500. The HRP-conjugated anti-rabbit IgG antibody (GTx213110-01) was used to detect the primary antibody.



GTx00969 IHC-P Image

IHC-P analysis of rat brain tissue section using GTx00969 SMAD3 (phospho Ser423/Ser425) antibody [GT1207].

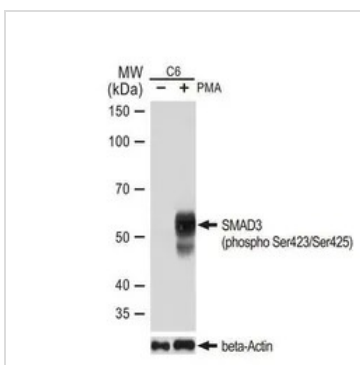
Dilution : 1:100



GTx00969 IHC-P Image

IHC-P analysis of mouse testis tissue section using GTx00969 SMAD3 (phospho Ser423/Ser425) antibody [GT1207].

Dilution : 1:100



GTx00969 WB Image

WB analysis of C6 cell extracts with/without PMA/TPA (200 nM, 37°C, 10 min) treatment using GTx00969 SMAD3 (phospho Ser423/Ser425) antibody [GT1207].

Dilution : 1:1000

Loading : 25µg



For full product information, images and publications, please visit our [website](https://www.genetex.com).