

STAT5A (phospho Tyr694) antibody [GT1208]

Cat. No. GTX00970

Host	Rabbit
Clonality	Monoclonal
Isotype	IgG
Application	WB, IHC-P
Reactivity	Human, Mouse, Rat

Package
100 µl

APPLICATION

Application Note

*Optimal dilutions/concentrations should be determined by the researcher.

Suggested dilution	Recommended dilution
WB	1:500 - 1:2000
IHC-P	1:50 - 1:200

Not tested in other applications.

Calculated MW 91 kDa. ([Note](#))

PROPERTIES

Form	Liquid
Buffer	PBS, 50% Glycerol
Preservative	0.02% Sodium azide
Storage	Store as concentrated solution. Centrifuge briefly prior to opening vial. For short-term storage (1-2 weeks), store at 4°C. For long-term storage, aliquot and store at -20°C or below. Avoid multiple freeze-thaw cycles.
Concentration	Batch dependent (Please refer to the vial label for the specific concentration.)
Immunogen	A synthesized peptide derived from human Phospho-Stat5 (Y694).
Purification	Purified by affinity chromatography
Conjugation	Unconjugated

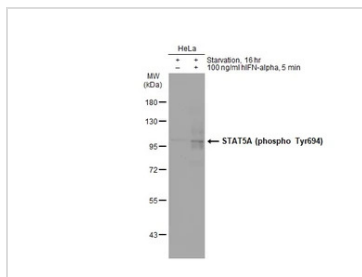
Note

For laboratory research use only. Not for any clinical, therapeutic, or diagnostic use in humans or animals. Not for animal or human consumption.

Purchasers shall not, and agree not to enable third parties to, analyze, copy, reverse engineer or otherwise attempt to determine the structure or sequence of the product.

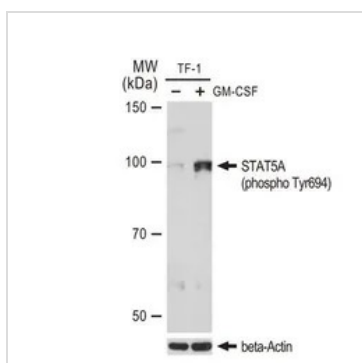


For full product information, images and publications, please visit our [website](#).

DATA IMAGES

GTX00970 WB Image

Untreated (–) and treated (+) HeLa whole cell extracts (30 µg) were separated by 7.5% SDS-PAGE, and the membrane was blotted with STAT5A (phospho Tyr694) antibody [GT1208] (GTX00970) diluted at 1:1000. The HRP-conjugated anti-rabbit IgG antibody (GTX213110-01) was used to detect the primary antibody, and the signal was developed with Trident ECL plus-Enhanced.

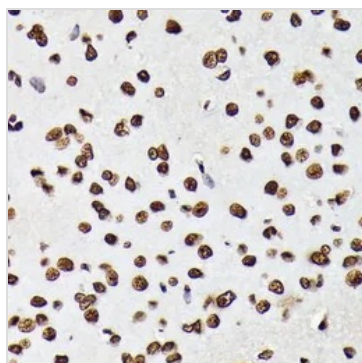
The observed M.W. is based on the publication: [PMID: 16461551](https://pubmed.ncbi.nlm.nih.gov/16461551/)


GTX00970 WB Image

WB analysis of TF-1 cell extracts with/without GM-CSF (25 ng/ml, 37°C, 30 mins) treatment after serum-starvation overnight using GTX00970 STAT5A (phospho Tyr694) antibody [GT1208].

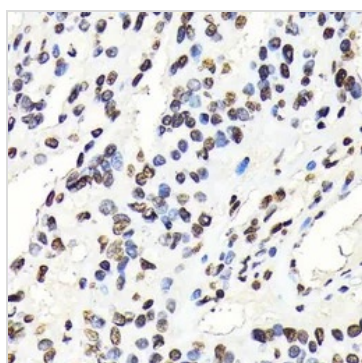
Dilution : 1:1000

Loading : 25 µg


GTX00970 IHC-P Image

IHC-P analysis of rat brain tissue section using GTX00970 STAT5A (phospho Tyr694) antibody [GT1208].

Dilution : 1:100


GTX00970 IHC-P Image

IHC-P analysis of human oophoroma tissue section using GTX00970 STAT5A (phospho Tyr694) antibody [GT1208].

Dilution : 1:100



For full product information, images and publications, please visit our [website](https://www.genetex.com).