

TRAF4 antibody

Cat. No. GTX00972

Host	Rabbit
Clonality	Polyclonal
Isotype	IgG
Applications	WB, IHC-P
Reactivity	Human, Mouse, Rat

Package
100 µg

Applications

Application Note

*Optimal dilutions/concentrations should be determined by the researcher.

Suggested dilution	Recommended dilution
WB	0.1-0.5µg/ml
IHC-P	0.5-1µg/ml

Note : Antigen retrieval by heat

Not tested in other applications.

Calculated MW 54 kDa. ([Note](#))

Product Note Superfamily members of TRAF4 are not reactive to this antibody.

Properties

Form	Liquid
Buffer	5mg BSA, 0.9mg NaCl, 0.2mg Na ₂ HPO ₄
Preservative	0.05mg Thimerosal, 0.05mg Sodium azide
Storage	Store as concentrated solution. Centrifuge briefly prior to opening vial. For short-term storage (1-2 weeks), store at 4°C. For long-term storage, aliquot and store at -20°C or below. Avoid multiple freeze-thaw cycles.
Concentration	0.5 mg/ml (Please refer to the vial label for the specific concentration.)
Immunogen	A synthetic peptide corresponding to a sequence at the C-terminus of human TRAF4(437-454aa PKFISHQDIRKRNIVRDD), identical to the related rat and mouse sequences.
Purification	Purified by antigen-affinity chromatography
Conjugation	Unconjugated



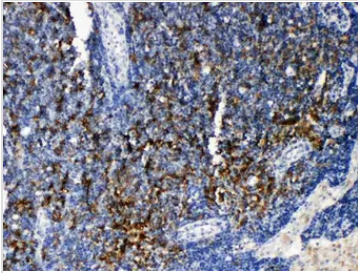
For full product information, images and publications, please visit our [website](#).

For laboratory research use only. Not for any clinical, therapeutic, or diagnostic use in humans or animals. Not for animal or human consumption.

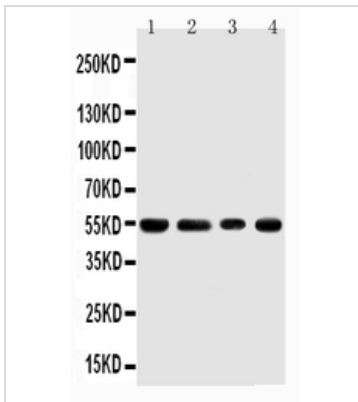
Note

Purchasers shall not, and agree not to enable third parties to, analyze, copy, reverse engineer or otherwise attempt to determine the structure or sequence of the product.

DATA IMAGES

**GTX00972 IHC-P Image**

IHC-P analysis of rat lymphonodus tissue using GTX00972 TRAF4 antibody.

**GTX00972 WB Image**

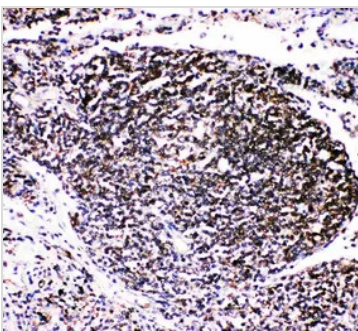
WB analysis of various sample lysates using GTX00972 TRAF4 antibody.

Lane 1 : Rat Thymus Tissue Lysate

Lane 2 : HeLa Cell Lysate

Lane 3 : Jurkat Cell Lysate

Lane 4: Hepa Cell Lysate

**GTX00972 IHC-P Image**

IHC-P analysis of human lung cancer tissue using GTX00972 TRAF4 antibody.



For full product information, images and publications, please visit our [website](#).