

MLKL (phospho Ser358) antibody

Cat. No. GTX00973

Host	Rabbit
Clonality	Polyclonal
Isotype	IgG
Applications	WB, IHC-P, ELISA
Reactivity	Human, Mouse, Rat

References (3)

Package

100 µl

Applications

Application Note

*Optimal dilutions/concentrations should be determined by the researcher.

Suggested dilution	Recommended dilution
WB	1:500-1:2000
IHC-P	1:50-1:200
ELISA	Assay dependent

Not tested in other applications.

Calculated MW 54 kDa. ([Note](#))

Properties

Form	Liquid
Buffer	PBS, 150mM NaCl, 50% Glycerol
Preservative	0.02% Sodium azide
Storage	Store as concentrated solution. Centrifuge briefly prior to opening vial. For short-term storage (1-2 weeks), store at 4°C. For long-term storage, aliquot and store at -20°C or below. Avoid multiple freeze-thaw cycles.
Concentration	1 mg/ml (Please refer to the vial label for the specific concentration.)
Immunogen	A synthesized peptide derived from human MLKL around the phosphorylation site of Ser358.
Purification	Purified by sequential chromatography on phospho-peptide and non-phospho-peptide columns
Conjugation	Unconjugated

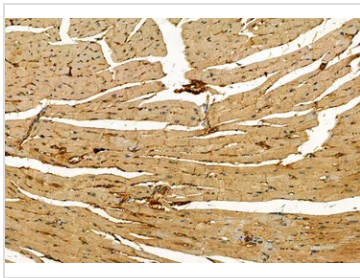
Note

For laboratory research use only. Not for any clinical, therapeutic, or diagnostic use in humans or animals. Not for animal or human consumption.

Purchasers shall not, and agree not to enable third parties to, analyze, copy, reverse engineer or otherwise attempt to determine the structure or sequence of the product.

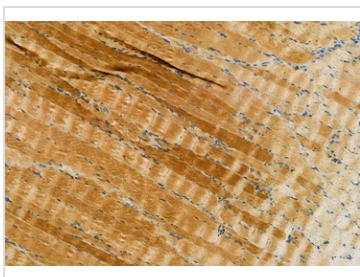


For full product information, images and publications, please visit our [website](#).

DATA IMAGES

GTx00973 IHC-P Image

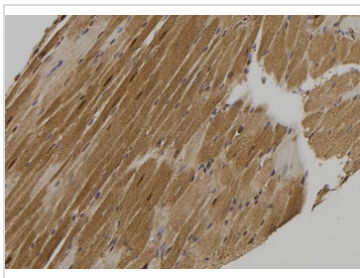
IHC-P analysis of mouse heart tissue using GTx00973 MLKL (phospho Ser358) antibody. The sample was formaldehyde fixed and a heat mediated antigen retrieval step in citrate buffer was performed.

Dilution : 1:100


GTx00973 IHC-P Image

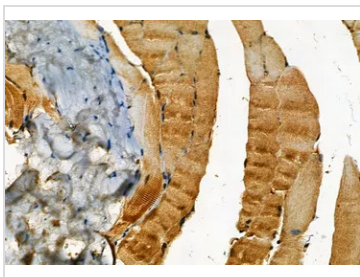
IHC-P analysis of rat muscle tissue using GTx00973 MLKL (phospho Ser358) antibody. The sample was formaldehyde fixed and a heat mediated antigen retrieval step in citrate buffer was performed.

Dilution : 1:100


GTx00973 IHC-P Image

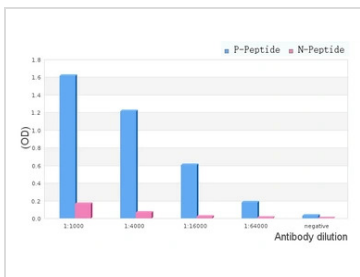
IHC-P analysis of mouse heart tissue using GTx00973 MLKL (phospho Ser358) antibody. The sample was formaldehyde fixed and a heat mediated antigen retrieval step in citrate buffer was performed.

Dilution : 1:100


GTx00973 IHC-P Image

IHC-P analysis of mouse muscle tissue using GTx00973 MLKL (phospho Ser358) antibody. The sample was formaldehyde fixed and a heat mediated antigen retrieval step in citrate buffer was performed.

Dilution : 1:100


GTx00973 ELISA Image

ELISA analysis of phospho- and non phospho- immunogen peptide using GTx00973 MLKL (phospho Ser358) antibody.

P-peptide : phospho-peptide

N-peptide : non-phospho-peptide

Peptides concentration : 1µg/ml



For full product information, images and publications, please visit our [website](http://www.genetex.com).