

MYF5 antibody

Cat. No. GTX00974

Host	Rabbit
Clonality	Polyclonal
Isotype	IgG
Application	WB, ELISA
Reactivity	Human, Mouse, Rat

Package
100 µg

APPLICATION

Application Note

*Optimal dilutions/concentrations should be determined by the researcher.

Suggested dilution	Recommended dilution
WB	0.1-0.5µg/ml
ELISA	0.1-0.5µg/ml

Not tested in other applications.

Calculated MW	28 kDa. (Note)
Product Note	Superfamily members of MYF5 are not reactive to this antibody.

PROPERTIES

Form	Liquid
Buffer	4mg Trehalose, 0.9mg NaCl, 0.2mg Na ₂ HPO ₄
Preservative	0.05mg Sodium azide
Storage	Store as concentrated solution. Centrifuge briefly prior to opening vial. For short-term storage (1-2 weeks), store at 4°C. For long-term storage, aliquot and store at -20°C or below. Avoid multiple freeze-thaw cycles.
Concentration	0.5-1 mg/ml (Please refer to the vial label for the specific concentration.)
Immunogen	E. coli-derived human Myf5 recombinant protein (Position: E25-Y146).
Purification	Purified by antigen-affinity chromatography
Conjugation	Unconjugated

Note

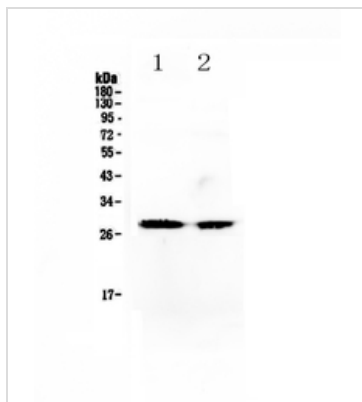
For laboratory research use only. Not for any clinical, therapeutic, or diagnostic use in humans or animals. Not for animal or human consumption.

Purchasers shall not, and agree not to enable third parties to, analyze, copy, reverse engineer or otherwise attempt to determine the structure or sequence of the product.



For full product information, images and publications, please visit our [website](#).

DATA IMAGES



GTX00974 WB Image

WB analysis of various sample lysates using GTX00974 MYF5 antibody.

Lane 1 : SW620 cell lysates

Lane 2 : mouse testis tissue lysates

Dilution : 0.5µg/ml

Loading : 50µg



For full product information, images and publications, please visit our [website](https://www.genetex.com).