

14-3-3 alpha/beta antibody [SD0837]

Cat No. GTX00978

Host	Rabbit
Clonality	Monoclonal
Isotype	IgG
Application	WB, ICC/IF, IHC-P, FACS
Reactivity	Human, Mouse

Package
100 µl

APPLICATION

Application Note

*Optimal dilutions/concentrations should be determined by the researcher.

Suggested dilution	Dilution
WB	1:1000-1:5000
ICC/IF	1:100-1:500
IHC-P	1:50-1:200
FACS	1:50-1:100

Not tested in other applications.

Calculated MW 28 kDa. ([Note](#))

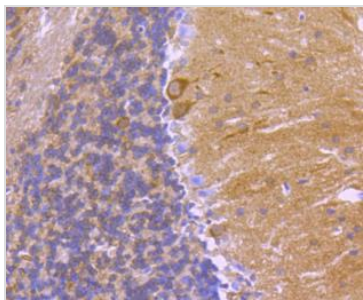
PROPERTIES

Form	Liquid
Buffer	1x TBS (pH7.4), 1% BSA, 40% glycerol, 0.05% sodium azide
Storage	Store as concentrated solution. Centrifuge briefly prior to opening vial. For short-term storage (1-2 weeks), store at 4°C. For long-term storage, aliquot and store at -20°C or below. Avoid multiple freeze-thaw cycles.
Concentration	1 mg/ml (Please refer to the vial label for the specific concentration.)
Immunogen	Recombinant protein
Purification	Protein A purified
Conjugation	Unconjugated
Note	For laboratory use only. Not for any clinical, therapeutic, or diagnostic use in humans or animals. Not for animal or human consumption.

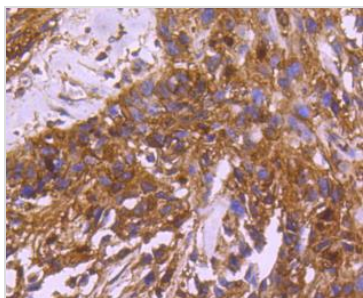


For full product information, images and publications, please visit our [website](#).

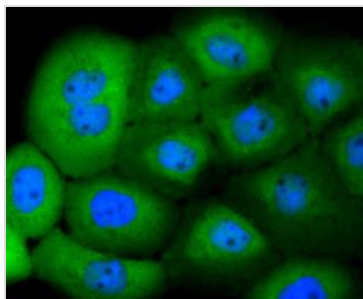
DATA IMAGES

**GTX00978 IHC-P Image**

IHC-P analysis of mouse brain tissue section using GTX00978 14-3-3 alpha/beta antibody [SD0837].

**GTX00978 IHC-P Image**

IHC-P analysis of human breast carcinoma tissue section using GTX00978 14-3-3 alpha/beta antibody [SD0837].

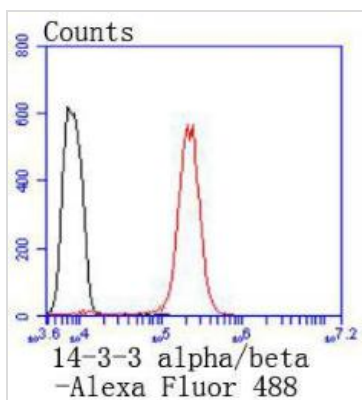
**GTX00978 ICC/IF Image**

ICC/IF analysis of PFA-fixed A431 cells using GTX00978 14-3-3 alpha/beta antibody [SD0837].

Green : primary antibody

Blue : DAPI

Permeabilization : 0.25% Triton X-100 in PBS

**GTX00978 FACS Image**

FACS analysis of HeLa cells using GTX00978 14-3-3 alpha/beta antibody [SD0837].

Red : primary antibody

Black : unlabelled control

Dilution : 1:50



For full product information, images and publications, please visit our [website](#).