

Cullin 1 antibody [JM72-30]

Cat. No. GTX00988

Host	Rabbit
Clonality	Monoclonal
Isotype	IgG
Applications	WB, IHC-P, FCM
Reactivity	Human, Mouse, Rat

Package
100 µl

Applications

Application Note

*Optimal dilutions/concentrations should be determined by the researcher.

Suggested dilution	Recommended dilution
WB	1:500-1:2000
IHC-P	1:50-1:200
FCM	1:50-1:100

Not tested in other applications.

Calculated MW 90 kDa. ([Note](#))

Properties

Form	Liquid
Buffer	TBS, 1% BSA, 40% Glycerol
Preservative	0.05% Sodium azide
Storage	Store as concentrated solution. Centrifuge briefly prior to opening vial. For short-term storage (1-2 weeks), store at 4°C. For long-term storage, aliquot and store at -20°C or below. Avoid multiple freeze-thaw cycles.
Concentration	1 mg/ml (Please refer to the vial label for the specific concentration.)
Immunogen	Recombinant protein
Purification	Protein A purified
Conjugation	Unconjugated

Note

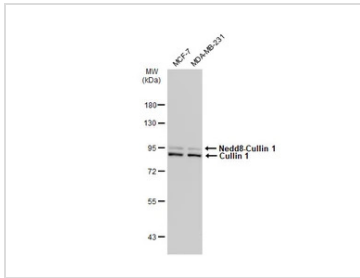
For laboratory research use only. Not for any clinical, therapeutic, or diagnostic use in humans or animals. Not for animal or human consumption.

Purchasers shall not, and agree not to enable third parties to, analyze, copy, reverse engineer or otherwise attempt to determine the structure or sequence of the product.



For full product information, images and publications, please visit our [website](#).

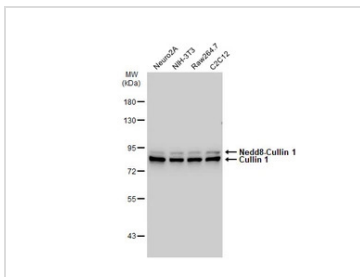
DATA IMAGES

**GTX00988 WB Image**

Various whole cell extracts (30 µg) were separated by 7.5% SDS-PAGE, and the membrane was blotted with Cullin 1 antibody [JM72-30] (GTX00988) diluted at 1:500. The HRP-conjugated anti-rabbit IgG antibody (GTX213110-01) was used to detect the primary antibody.

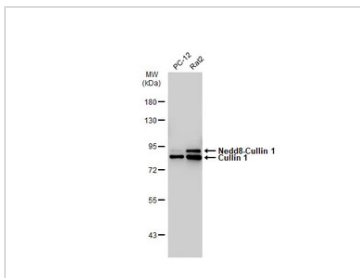
Double bands were observed. It is possibly due to post-translational modification.

Reference : [PMID: 22457814](https://pubmed.ncbi.nlm.nih.gov/22457814/)

**GTX00988 WB Image**

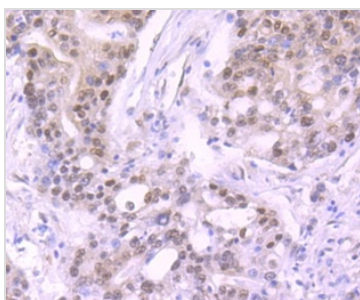
Various whole cell extracts (30 µg) were separated by 7.5% SDS-PAGE, and the membrane was blotted with Cullin 1 antibody [JM72-30] (GTX00988) diluted at 1:1000. The HRP-conjugated anti-rabbit IgG antibody (GTX213110-01) was used to detect the primary antibody.

Double bands were observed. It is possibly due to post-translational modification. Reference : [PMID: 22457814](https://pubmed.ncbi.nlm.nih.gov/22457814/)

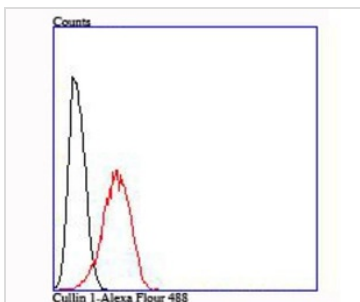
**GTX00988 WB Image**

Various whole cell extracts (30 µg) were separated by 7.5% SDS-PAGE, and the membrane was blotted with Cullin 1 antibody [JM72-30] (GTX00988) diluted at 1:1000. The HRP-conjugated anti-rabbit IgG antibody (GTX213110-01) was used to detect the primary antibody.

Double bands were observed. It is possibly due to post-translational modification. Reference : [PMID: 22457814](https://pubmed.ncbi.nlm.nih.gov/22457814/)

**GTX00988 IHC-P Image**

IHC-P analysis of human stomach cancer tissue section using GTX00988 Cullin 1 antibody [JM72-30].

**GTX00988 FCM Image**

FACS analysis of HeLa cells using GTX00988 Cullin 1 antibody [JM72-30].

Red : primary antibody

Black : unlabelled control

Dilution : 1:100



For full product information, images and publications, please visit our [website](https://www.genetex.com).