

## Pyruvate dehydrogenase kinase 1 / PDK1 antibody [JA67-30]

**Cat. No. GTX01020**

<b>Host</b>	Rabbit
<b>Clonality</b>	Monoclonal
<b>Isotype</b>	IgG
<b>Applications</b>	WB, ICC/IF, IHC-P, FCM
<b>Reactivity</b>	Human, Mouse, Rat

**Package**  
100 µl

## Applications

**Application Note**

\*Optimal dilutions/concentrations should be determined by the researcher.

Suggested dilution	Recommended dilution
WB	1:500-1:2000
ICC/IF	1:50-1:200
IHC-P	1:50-1:200
FCM	1:50-1:100

Not tested in other applications.

**Calculated MW** 49 kDa. ( [Note](#) )

## Properties

<b>Form</b>	Liquid
<b>Buffer</b>	1x TBS (pH7.4), 1% BSA, 40% Glycerol
<b>Preservative</b>	0.05% Sodium azide
<b>Storage</b>	Store as concentrated solution. Centrifuge briefly prior to opening vial. For short-term storage (1-2 weeks), store at 4°C. For long-term storage, aliquot and store at -20°C or below. Avoid multiple freeze-thaw cycles.
<b>Concentration</b>	1 mg/ml (Please refer to the vial label for the specific concentration.)
<b>Immunogen</b>	Recombinant protein
<b>Purification</b>	Protein A purified
<b>Conjugation</b>	Unconjugated

**Note**

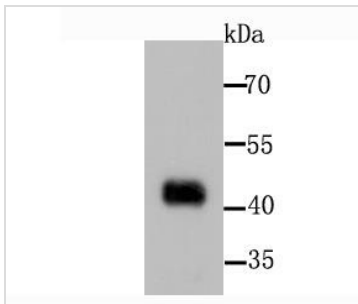
For laboratory research use only. Not for any clinical, therapeutic, or diagnostic use in humans or animals. Not for animal or human consumption.

Purchasers shall not, and agree not to enable third parties to, analyze, copy, reverse engineer or otherwise attempt to determine the structure or sequence of the product.



For full product information, images and publications, please visit our [website](#).

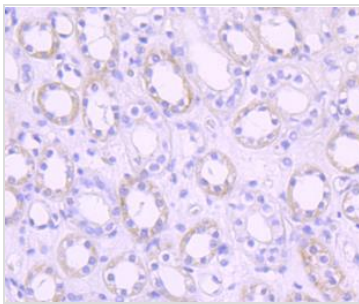
## DATA IMAGES



### GTx01020 WB Image

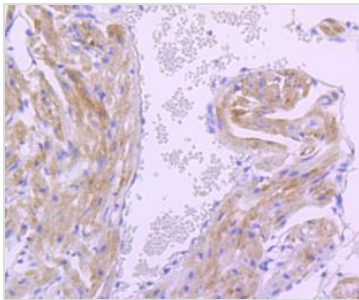
WB analysis of rat heart tissue lysate using GTx01020 Pyruvate dehydrogenase kinase 1 / PDK1 antibody [JA67-30].

Dilution : 1:1000



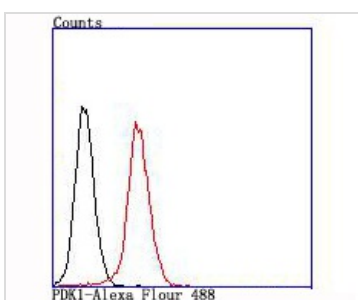
### GTx01020 IHC-P Image

IHC-P analysis of human kidney tissue section using GTx01020 Pyruvate dehydrogenase kinase 1 / PDK1 antibody [JA67-30].



### GTx01020 IHC-P Image

IHC-P analysis of mouse heart tissue section using GTx01020 Pyruvate dehydrogenase kinase 1 / PDK1 antibody [JA67-30].



### GTx01020 FCM Image

FACS analysis of NIH-3T3 cells using GTx01020 Pyruvate dehydrogenase kinase 1 / PDK1 antibody [JA67-30].

Red : primary antibody

Black : unlabelled control

Dilution : 1:100



For full product information, images and publications, please visit our [website](https://www.genetex.com).