

MGEA5 antibody

Cat. No. GTX01028

Host	Rabbit
Clonality	Polyclonal
Isotype	IgG
Applications	WB, IHC-P, FCM
Reactivity	Human

Package
200 µl

Applications

Application Note

*Optimal dilutions/concentrations should be determined by the researcher.

Suggested dilution	Recommended dilution
WB	1:2000
IHC-P	1:25
FCM	1:25

Not tested in other applications.

Calculated MW 103 kDa. ([Note](#))

Properties

Form	Liquid
Buffer	PBS
Preservative	0.09% Sodium azide
Storage	Store as concentrated solution. Centrifuge briefly prior to opening vial. For short-term storage (1-2 weeks), store at 4°C. For long-term storage, aliquot and store at -20°C or below. Avoid multiple freeze-thaw cycles.
Concentration	Batch dependent (Please refer to the vial label for the specific concentration.)
Immunogen	This MGEA5 antibody is generated from a rabbit immunized with a KLH conjugated synthetic peptide between 236-269 amino acids from the human region of human MGEA5.
Purification	Purified by protein A column, followed by peptide affinity purification.
Conjugation	Unconjugated

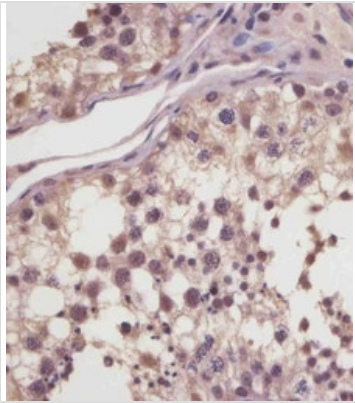
Note

For laboratory research use only. Not for any clinical, therapeutic, or diagnostic use in humans or animals. Not for animal or human consumption.

Purchasers shall not, and agree not to enable third parties to, analyze, copy, reverse engineer or otherwise attempt to determine the structure or sequence of the product.



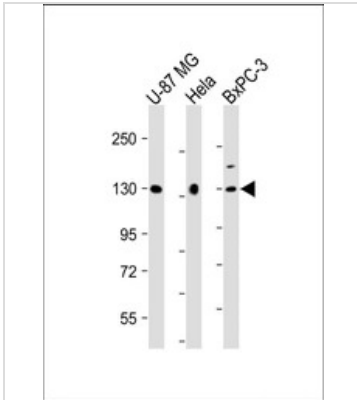
For full product information, images and publications, please visit our [website](#).

DATA IMAGES

GTX01028 IHC-P Image

IHC-P analysis of human testis tissue sections using GTX01028 MGEA5 antibody.

Antigen retrieval : Heat mediation with a citrate buffer (pH6)

Dilution : 1:25


GTX01028 WB Image

WB analysis of various sample lysates using GTX01028 MGEA5 antibody.

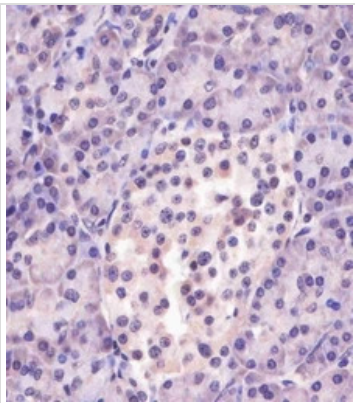
Lane 1 : U-87 MG whole cell lysate

Lane 2 : HeLa whole cell lysate

Lane 3 : BxPC-3 whole cell lysate

Dilution : 1:2000

Loading : 20 µg per lane


GTX01028 IHC-P Image

IHC-P analysis of human pancreas tissue sections using GTX01028 MGEA5 antibody.

Antigen retrieval : Heat mediation with a citrate buffer (pH6)

Dilution : 1:25



For full product information, images and publications, please visit our [website](https://www.genetex.com).