

## SMAD2 (phospho Ser250) antibody [SD207-1]

Cat. No. GTX01034

Host	Rabbit
Clonality	Monoclonal
Isotype	IgG
Application	WB, FACS
Reactivity	Human

Package  
100 µl

## APPLICATION

## Application Note

\*Optimal dilutions/concentrations should be determined by the researcher.

Suggested dilution	Recommended dilution
WB	1:1000-1:2000
FACS	1:50-1:100

Not tested in other applications.

Calculated MW 52 kDa. ( [Note](#) )

## PROPERTIES

Form	Liquid
Buffer	TBS, 1% BSA, 40% Glycerol
Preservative	0.05% Sodium azide
Storage	Store as concentrated solution. Centrifuge briefly prior to opening vial. For short-term storage (1-2 weeks), store at 4°C. For long-term storage, aliquot and store at -20°C or below. Avoid multiple freeze-thaw cycles.
Concentration	1 mg/ml (Please refer to the vial label for the specific concentration.)
Immunogen	Recombinant protein
Purification	Protein A purified
Conjugation	Unconjugated

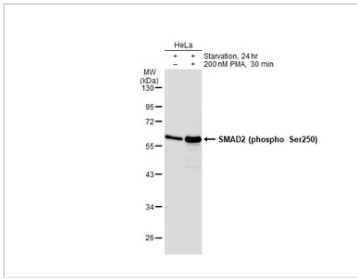
## Note

For laboratory research use only. Not for any clinical, therapeutic, or diagnostic use in humans or animals. Not for animal or human consumption.

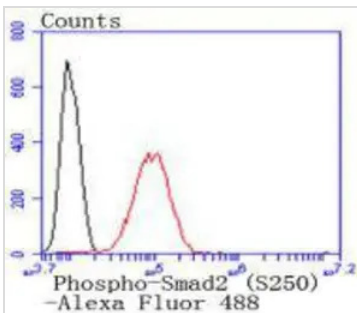
Purchasers shall not, and agree not to enable third parties to, analyze, copy, reverse engineer or otherwise attempt to determine the structure or sequence of the product.



For full product information, images and publications, please visit our [website](#).

**DATA IMAGES**

**GTX01034 WB Image**

Untreated (–) and treated (+) HeLa whole cell extracts (30 µg) were separated by 10% SDS-PAGE, and the membrane was blotted with SMAD2 (phospho Ser250) antibody [SD207-1] (GTX01034) diluted at 1:500. The HRP-conjugated anti-rabbit IgG antibody (GTX213110-01) was used to detect the primary antibody.


**GTX01034 FACS Image**

FACS analysis of HeLa cells using GTX01034 SMAD2 (phospho Ser250) antibody [SD207-1].

Red : primary antibody

Black : unlabelled control

Dilution : 1:50



For full product information, images and publications, please visit our [website](https://www.genetex.com).