

## Cullin 4a antibody [JU07-33]

Cat. No. GTX01050

Host	Rabbit
Clonality	Monoclonal
Isotype	IgG
Application	WB, ICC/IF, IHC-P, FACS
Reactivity	Human

Package  
100 µl

## APPLICATION

## Application Note

\*Optimal dilutions/concentrations should be determined by the researcher.

Suggested dilution	Recommended dilution
WB	1:500-1:2000
ICC/IF	1:50-1:200
IHC-P	1:50-1:200
FACS	1:50-1:100

Not tested in other applications.

Calculated MW 88 kDa. ( [Note](#) )

## PROPERTIES

Form	Liquid
Buffer	1x TBS (pH7.4), 1% BSA, 40% Glycerol
Preservative	0.05% Sodium azide
Storage	Store as concentrated solution. Centrifuge briefly prior to opening vial. For short-term storage (1-2 weeks), store at 4°C. For long-term storage, aliquot and store at -20°C or below. Avoid multiple freeze-thaw cycles.
Concentration	1 mg/ml (Please refer to the vial label for the specific concentration.)
Immunogen	Recombinant protein
Purification	Protein A purified
Conjugation	Unconjugated

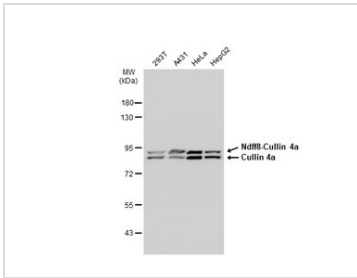
## Note

For laboratory research use only. Not for any clinical, therapeutic, or diagnostic use in humans or animals. Not for animal or human consumption.

Purchasers shall not, and agree not to enable third parties to, analyze, copy, reverse engineer or otherwise attempt to determine the structure or sequence of the product.



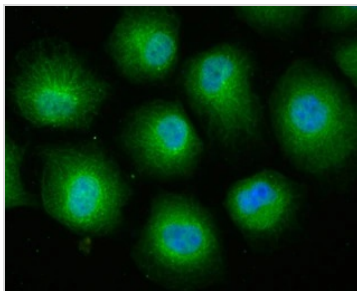
For full product information, images and publications, please visit our [website](#).

**DATA IMAGES**

**GTX01050 WB Image**

Various whole cell extracts (30 µg) were separated by 7.5% SDS-PAGE, and the membrane was blotted with Cullin 4a antibody [JU07-33] (GTX01050) diluted at 1:500. The HRP-conjugated anti-rabbit IgG antibody (GTX213110-01) was used to detect the primary antibody.

The double bands were observed. It is possibly due to post translational modification.

Reference: [PMID: 24870930](#) and [PMID: 21487042](#)

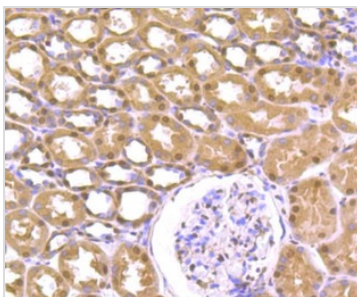

**GTX01050 ICC/IF Image**

ICC/IF analysis of PFA-fixed HUVEC cells using GTX01050 Cullin 4a antibody [JU07-33].

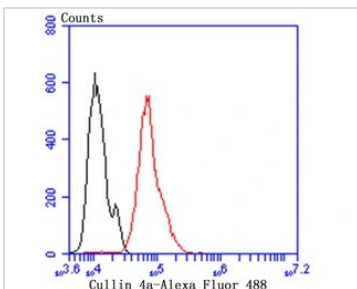
Green : primary antibody

Blue : DAPI

Permeabilization : 0.25% Triton X-100 in PBS


**GTX01050 IHC-P Image**

IHC-P analysis of human kidney tissue section using GTX01050 Cullin 4a antibody [JU07-33].

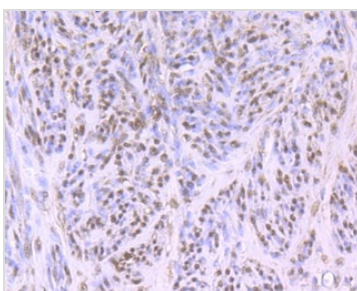

**GTX01050 FACS Image**

FACS analysis of HeLa cells using GTX01050 Cullin 4a antibody [JU07-33].

Green : primary antibody

Red : unlabelled control

Dilution : 1:100


**GTX01050 IHC-P Image**

IHC-P analysis of human cervix tissue section using GTX01050 Cullin 4a antibody [JU07-33].



For full product information, images and publications, please visit our [website](#).