

# Ikaros antibody [JB50-38]

**Cat. No. GTX01051**

<b>Host</b>	Rabbit
<b>Clonality</b>	Monoclonal
<b>Isotype</b>	IgG
<b>Application</b>	WB, IHC-P, FACS
<b>Reactivity</b>	Human, Mouse

**Package**  
100 µl

## APPLICATION

### Application Note

\*Optimal dilutions/concentrations should be determined by the researcher.

Suggested dilution	Recommended dilution
WB	1:500-1:2000
IHC-P	1:50-1:200
FACS	1:50-1:100

Not tested in other applications.

<b>Calculated MW</b>	58 kDa. ( <a href="#">Note</a> )
<b>Observed MW</b>	48-75 kDa. The observed M.W. is based on the following publication. PMID: 15015965

## PROPERTIES

<b>Form</b>	Liquid
<b>Buffer</b>	TBS, 1% BSA, 40% Glycerol
<b>Preservative</b>	0.05% Sodium azide
<b>Storage</b>	Store as concentrated solution. Centrifuge briefly prior to opening vial. For short-term storage (1-2 weeks), store at 4°C. For long-term storage, aliquot and store at -20°C or below. Avoid multiple freeze-thaw cycles.
<b>Concentration</b>	1 mg/ml (Please refer to the vial label for the specific concentration.)
<b>Immunogen</b>	Recombinant protein
<b>Purification</b>	Protein A purified
<b>Conjugation</b>	Unconjugated

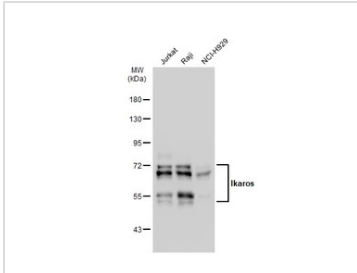


For full product information, images and publications, please visit our [website](#).

For laboratory research use only. Not for any clinical, therapeutic, or diagnostic use in humans or animals. Not for animal or human consumption.

**Note**

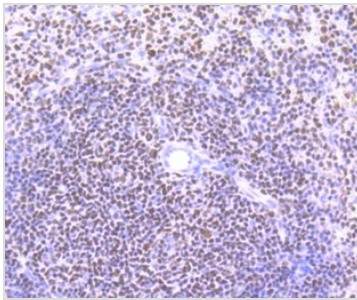
Purchasers shall not, and agree not to enable third parties to, analyze, copy, reverse engineer or otherwise attempt to determine the structure or sequence of the product.

**DATA IMAGES**

**GTx01051 WB Image**

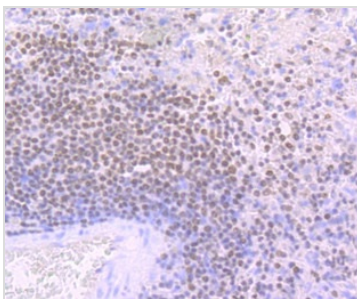
Various whole cell extracts (30 µg) were separated by 7.5% SDS-PAGE, and the membrane was blotted with Ikaros antibody [JB50-38] (GTx01051) diluted at 1:500. The HRP-conjugated anti-rabbit IgG antibody (GTx213110-01) was used to detect the primary antibody.

Multiple bands were observed. It is possibly due to alternative splicing.

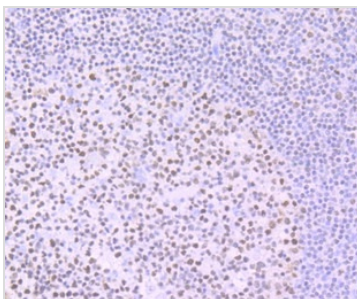
Reference: [PMID: 15015965](https://pubmed.ncbi.nlm.nih.gov/15015965/)


**GTx01051 IHC-P Image**

IHC-P analysis of mouse spleen tissue section using GTx01051 Ikaros antibody [JB50-38].


**GTx01051 IHC-P Image**

IHC-P analysis of human spleen tissue section using GTx01051 Ikaros antibody [JB50-38].


**GTx01051 IHC-P Image**

IHC-P analysis of human tonsil tissue section using GTx01051 Ikaros antibody [JB50-38].



For full product information, images and publications, please visit our [website](https://www.genetex.com).