

## CD46 antibody [JB25-49]

Cat. No. GTX01058

Host	Rabbit
Clonality	Monoclonal
Isotype	IgG
Application	WB, ICC/IF, IHC-P
Reactivity	Human, Rat

Package  
100 µl

## APPLICATION

## Application Note

\*Optimal dilutions/concentrations should be determined by the researcher.

Suggested dilution	Recommended dilution
WB	1:1000-1:5000
ICC/IF	1:50-1:200
IHC-P	1:50-1:200

Not tested in other applications.

Calculated MW	44 kDa. ( <a href="#">Note</a> )
Observed MW	56-66 kDa. The observed M.W. is based on the following publication. PMID: 22293503

## PROPERTIES

Form	Liquid
Buffer	1x TBS (pH7.4), 1% BSA, 40% Glycerol
Preservative	0.05% Sodium azide
Storage	Store as concentrated solution. Centrifuge briefly prior to opening vial. For short-term storage (1-2 weeks), store at 4°C. For long-term storage, aliquot and store at -20°C or below. Avoid multiple freeze-thaw cycles.
Concentration	1 mg/ml (Please refer to the vial label for the specific concentration.)
Immunogen	Recombinant protein
Purification	Protein A purified
Conjugation	Unconjugated

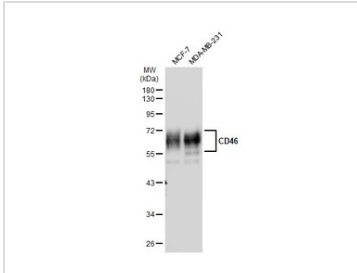


For full product information, images and publications, please visit our [website](#).

For laboratory research use only. Not for any clinical, therapeutic, or diagnostic use in humans or animals. Not for animal or human consumption.

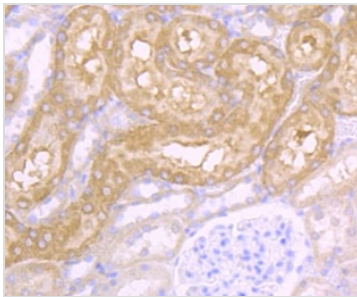
**Note**

Purchasers shall not, and agree not to enable third parties to, analyze, copy, reverse engineer or otherwise attempt to determine the structure or sequence of the product.

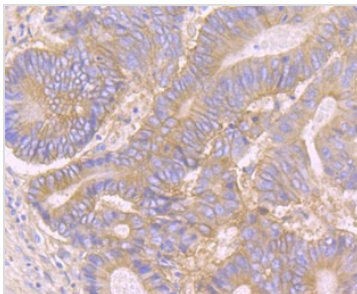
**DATA IMAGES**

**GTx01058 WB Image**

Various whole cell extracts (30 µg) were separated by 10% SDS-PAGE, and the membrane was blotted with CD46 antibody [JB25-49] (GTx01058) diluted at 1:500. The HRP-conjugated anti-rabbit IgG antibody (GTx213110-01) was used to detect the primary antibody.

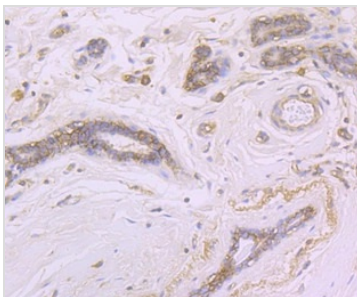
The observed M.W. is based on the publication: [PMID: 22293503](https://pubmed.ncbi.nlm.nih.gov/22293503/)


**GTx01058 IHC-P Image**

IHC-P analysis of rat kidney tissue section using GTx01058 CD46 antibody [JB25-49].


**GTx01058 IHC-P Image**

IHC-P analysis of human colon cancer tissue section using GTx01058 CD46 antibody [JB25-49].


**GTx01058 IHC-P Image**

IHC-P analysis of human breast tissue section using GTx01058 CD46 antibody [JB25-49].



For full product information, images and publications, please visit our [website](https://www.genetex.com).