

UCHL5 antibody

Cat. No. GTX01069

Host	Rabbit
Clonality	Polyclonal
Isotype	IgG
Applications	WB, IHC-Fr
Reactivity	Human, Mouse

Package
400 µl

Applications

Application Note

*Optimal dilutions/concentrations should be determined by the researcher.

Suggested dilution	Recommended dilution
WB	1:1000
IHC-Fr	1:50-1:100

Not tested in other applications.

Calculated MW 38 kDa. ([Note](#))

Properties

Form	Liquid
Buffer	PBS
Preservative	0.09% Sodium azide
Storage	Store as concentrated solution. Centrifuge briefly prior to opening vial. For short-term storage (1-2 weeks), store at 4°C. For long-term storage, aliquot and store at -20°C or below. Avoid multiple freeze-thaw cycles.
Concentration	Batch dependent (Please refer to the vial label for the specific concentration.)
Immunogen	This UCH37 (UCHL5) antibody is generated from rabbits immunized with a KLH conjugated synthetic peptide between 56-87 amino acids from the N-terminal region of human UCH37 (UCHL5).
Purification	Purified by Saturated Ammonium Sulfate (SAS) precipitation followed by dialysis against PBS.
Conjugation	Unconjugated

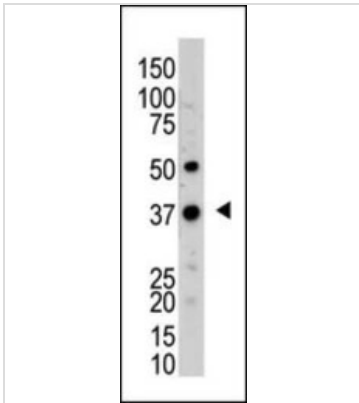
Note For laboratory research use only. Not for any clinical, therapeutic, or diagnostic use in humans or animals. Not for animal or human consumption.

Purchasers shall not, and agree not to enable third parties to, analyze, copy, reverse engineer or otherwise attempt to determine the structure or sequence of the product.

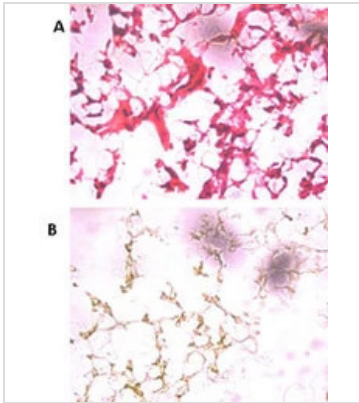


For full product information, images and publications, please visit our [website](#).

DATA IMAGES

**GTX01069 WB Image**

WB analysis of mouse kidney tissue lysate using GTX01069 UCHL5 antibody.

**GTX01069 IHC-Fr Image**

IHC-Fr analysis of human ovarian cancer tissue using GTX01069 UCHL5 antibody.

Panel A : HE staining

Panel B : IHC-Fr staining

Dilution : 1:250



For full product information, images and publications, please visit our [website](#).