

XRN2 antibody

Cat. No. GTX01072

Host	Rabbit
Clonality	Polyclonal
Isotype	IgG
Applications	WB, ICC/IF, IHC-P
Reactivity	Human, Mouse, Monkey

Package
100 µl

Applications

Application Note

*Optimal dilutions/concentrations should be determined by the researcher.

Suggested dilution	Recommended dilution
WB	1:500-1:2000
ICC/IF	1:100-1:500
IHC-P	1:50-1:200

Not tested in other applications.

Calculated MW 109 kDa. ([Note](#))

Properties

Form	Liquid
Buffer	PBS, 150mM NaCl, 50% Glycerol
Preservative	0.02% Sodium azide
Storage	Store as concentrated solution. Centrifuge briefly prior to opening vial. For short-term storage (1-2 weeks), store at 4°C. For long-term storage, aliquot and store at -20°C or below. Avoid multiple freeze-thaw cycles.
Concentration	1 mg/ml (Please refer to the vial label for the specific concentration.)
Immunogen	A synthesized peptide derived from human XRN2, corresponding to a region within N-terminal amino acids.
Purification	Purified by antigen-affinity chromatography
Conjugation	Unconjugated

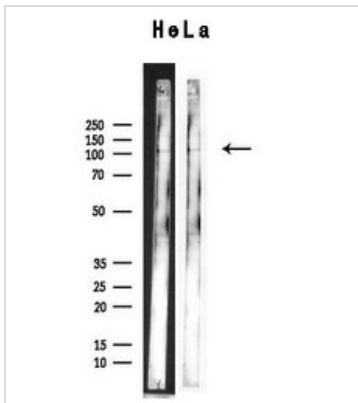
Note

For laboratory research use only. Not for any clinical, therapeutic, or diagnostic use in humans or animals. Not for animal or human consumption.

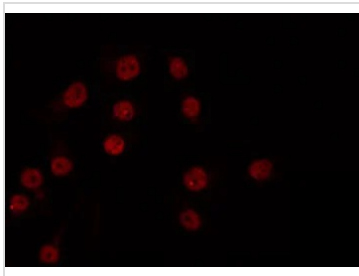
Purchasers shall not, and agree not to enable third parties to, analyze, copy, reverse engineer or otherwise attempt to determine the structure or sequence of the product.



For full product information, images and publications, please visit our [website](#).

DATA IMAGES

GTX01072 WB Image

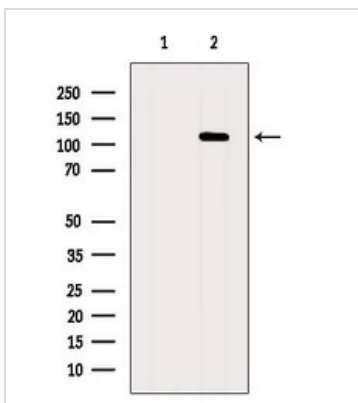
WB analysis of HeLa cell lysate using GTX01072 XRN2 Antibody.


GTX01072 ICC/IF Image

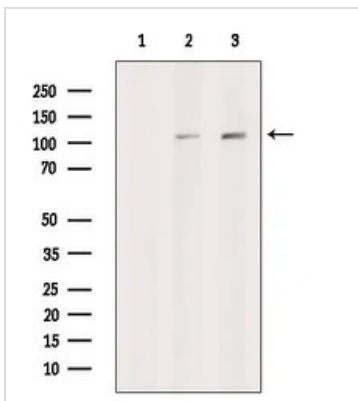
ICC/IF analysis of PFA-fixed COS7 cells using GTX01072 XRN2 Antibody.

Permeabilization : 0.1% Triton X-100

Dilution : 1:200


GTX01072 WB Image

WB analysis of HeLa cell lysate using GTX01072 XRN2 Antibody. The lane on the left was treated with blocking peptide.


GTX01072 WB Image

WB analysis of various sample lysates using GTX01072 XRN2 Antibody.

Lane 1 : P19 cell lysate treated with blocking peptide

Lane 2 : P19 cell lysate

Lane 3 : DU145 cell lysate



For full product information, images and publications, please visit our [website](https://www.genetex.com).