

SENP2 antibody

Cat. No. GTX01074

Host	Rabbit
Clonality	Polyclonal
Isotype	IgG
Applications	WB, ICC/IF
Reactivity	Human, Mouse, Rat, Monkey

Package
100 µl

Applications

Application Note

*Optimal dilutions/concentrations should be determined by the researcher.

Suggested dilution	Recommended dilution
WB	1:1000-1:3000
ICC/IF	1:200-1:500

Not tested in other applications.

Calculated MW 68 kDa. ([Note](#))

Properties

Form	Liquid
Buffer	PBS, 150mM NaCl, 50% Glycerol
Preservative	0.02% Sodium azide
Storage	Store as concentrated solution. Centrifuge briefly prior to opening vial. For short-term storage (1-2 weeks), store at 4°C. For long-term storage, aliquot and store at -20°C or below. Avoid multiple freeze-thaw cycles.
Concentration	1 mg/ml (Please refer to the vial label for the specific concentration.)
Immunogen	A synthesized peptide derived from human SENP2, corresponding to a region within C-terminal amino acids.
Purification	Purified by antigen-affinity chromatography
Conjugation	Unconjugated

Note

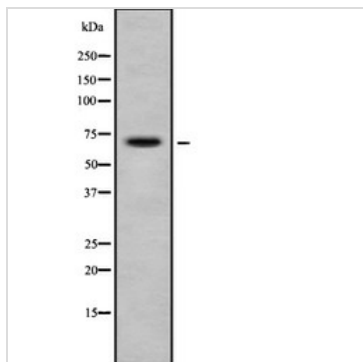
For laboratory research use only. Not for any clinical, therapeutic, or diagnostic use in humans or animals. Not for animal or human consumption.

Purchasers shall not, and agree not to enable third parties to, analyze, copy, reverse engineer or otherwise attempt to determine the structure or sequence of the product.



For full product information, images and publications, please visit our [website](#).

DATA IMAGES



GTX01074 WB Image

WB analysis of COS7 cell lysate using GTX01074 SENP2 antibody.

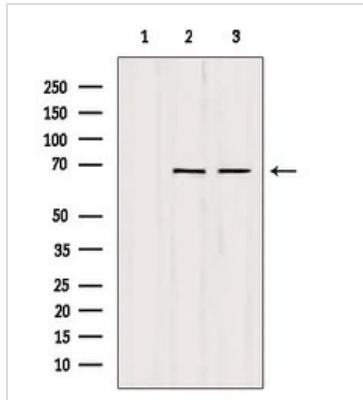


GTX01074 ICC/IF Image

ICC/IF analysis of PFA-fixed HeLa cells using GTX01074 SENP2 antibody.

Permeabilization : 0.1% Triton X-100

Dilution : 1:200



GTX01074 WB Image

WB analysis of various sample lysates using GTX01074 SENP2 antibody.

Lane 1 : mouse brain tissue lysate treated with blocking peptide

Lane 2 : mouse brain tissue lysate

Lane 3: rat brain tissue lysate



For full product information, images and publications, please visit our [website](#).