

GluR1 antibody

Cat. No. GTX01080

Host	Guinea pig
Clonality	Polyclonal
Isotype	IgG
Applications	WB, ICC/IF, IHC-Fr, LCI
Reactivity	Human, Mouse, Rat

Package

50 µl

Applications

Application Note

*Optimal dilutions/concentrations should be determined by the researcher.

Suggested dilution	Recommended dilution
WB	Assay dependent
ICC/IF	Assay dependent
IHC-Fr	Assay dependent
LCI	Assay dependent

Not tested in other applications.

Calculated MW 102 kDa. ([Note](#))

Properties

Form	Liquid
Buffer	PBS pH7.4, 1% BSA
Preservative	0.05% Sodium azide
Storage	Store as concentrated solution. Centrifuge briefly prior to opening vial. For short-term storage (1-2 weeks), store at 4°C. For long-term storage, aliquot and store at -20°C or below. Avoid multiple freeze-thaw cycles.
Concentration	Batch dependent (Please refer to the vial label for the specific concentration.)
Immunogen	Peptide RTSDSRDHTRVDWKR(C), corresponding to amino acid residues 271-285 of rat Extracellular, N-terminus GluR1 (Accession P19490).
Purification	Purified by antigen-affinity chromatography
Conjugation	Unconjugated



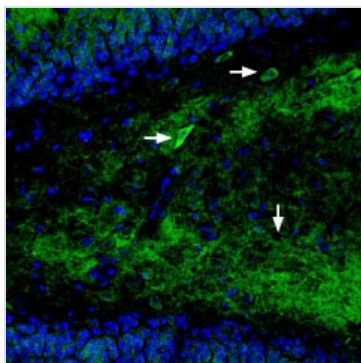
For full product information, images and publications, please visit our [website](#).

For laboratory research use only. Not for any clinical, therapeutic, or diagnostic use in humans or animals. Not for animal or human consumption.

Note

Purchasers shall not, and agree not to enable third parties to, analyze, copy, reverse engineer or otherwise attempt to determine the structure or sequence of the product.

DATA IMAGES



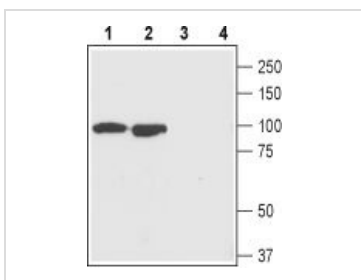
GTx01080 IHC-Fr Image

IHC-Fr analysis of perfusion-fixed rat hippocampus tissue using GTx01080 GluR1 antibody. GluR1 staining appears in neuronal outlines (horizontal arrows) and in the inner molecular layer of the dentate gyrus (vertical arrow).

Green : Primary antibody

Blue : DAPI

Dilution : 1:400



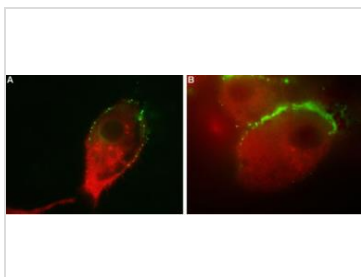
GTx01080 WB Image

WB analysis of rat (lanes 1 and 3) and mouse (lanes 2 and 4) brain tissue lysates using GTx01080 GluR1 antibody.

Lane 1, 2 : Primary antibody

Lane 3, 4 : Primary antibody preincubated with the negative control antigen

Dilution : 1:200



GTx01080 ICC/IF Image

ICC/IF analysis of U87-MG cells using GTx01080 GluR1 antibody. Representative merged images of the double labeled cells are shown in A and B.

Green : Primary antibody

Red : VGAT

Dilution : 1:25



For full product information, images and publications, please visit our [website](https://www.genetex.com).