

Integrin alpha V + beta 3 antibody

Cat. No. GTX01084

Host	Rabbit
Clonality	Polyclonal
Isotype	IgG
Applications	WB, ICC/IF, IHC-P, IHC-Fr, FCM
Reactivity	Human, Mouse, Rat

References (1)
 Package
 100 µl

Applications

Application Note

*Optimal dilutions/concentrations should be determined by the researcher.

Suggested dilution	Recommended dilution
WB	Assay dependent
ICC/IF	Assay dependent
IHC-P	1:200-1:400
IHC-Fr	Assay dependent
FCM	1:20-1:100

Not tested in other applications.

Properties

Form	Liquid
Buffer	1% BSA, 50% Glycerol
Preservative	0.09% Sodium azide
Storage	Store as concentrated solution. Centrifuge briefly prior to opening vial. For short-term storage (1-2 weeks), store at 4°C. For long-term storage, aliquot and store at -20°C or below. Avoid multiple freeze-thaw cycles.
Concentration	1 mg/ml (Please refer to the vial label for the specific concentration.)
Immunogen	KLH conjugated synthetic peptide derived from human Integrin Alpha V + Beta 3.
Purification	Protein A purified
Conjugation	Unconjugated

Note

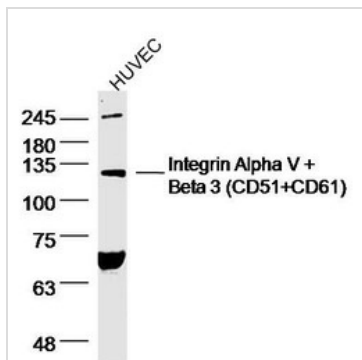
For laboratory research use only. Not for any clinical, therapeutic, or diagnostic use in humans or animals. Not for animal or human consumption.

Purchasers shall not, and agree not to enable third parties to, analyze, copy, reverse engineer or otherwise attempt to determine the structure or sequence of the product.



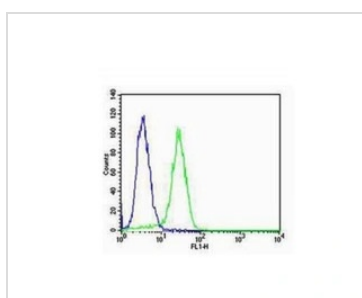
For full product information, images and publications, please visit our [website](#).

DATA IMAGES



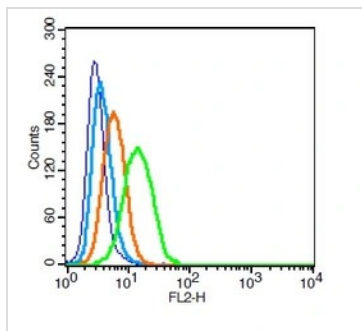
GTX01084 WB Image

WB analysis of HUVEC cells using GTX01084 Integrin alpha V + beta 3 antibody.
Dilution : 1:300



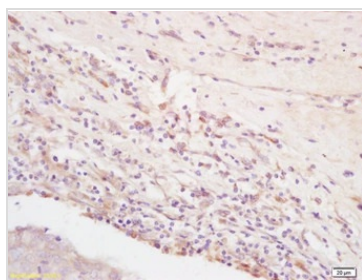
GTX01084 FCM Image

FACS analysis of MCF-7 cells using GTX01084 Integrin alpha V + beta 3 antibody.
Green : Primary antibody
Blue : Isotype control
Dilution : 1:100



GTX01084 FCM Image

FACS analysis of U937 cells using GTX01084 Integrin alpha V + beta 3 antibody.
Green : Primary antibody
Blue : Cell only control
Light Blue : Secondary antibody only control
Orange : Isotype control
Antibody amount : 0.2µg



GTX01084 IHC-P Image

IHC-P analysis of rat brain tissue using GTX01084 Integrin alpha V + beta 3 antibody.
Dilution : 1:200



For full product information, images and publications, please visit our [website](#).