

IMPDH2 antibody [JE40-87]

Cat. No. GTX01127

Host	Rabbit
Clonality	Monoclonal
Isotype	IgG
Application	WB, ICC/IF, IHC-P, FACS
Reactivity	Human, Mouse, Rat

Package
100 µl

APPLICATION

Application Note

*Optimal dilutions/concentrations should be determined by the researcher.

Suggested dilution	Recommended dilution
WB	1:500-1:2000
ICC/IF	1:50-1:200
IHC-P	1:50-1:200
FACS	1:10-1:50

Not tested in other applications.

Calculated MW 56 kDa. ([Note](#))

PROPERTIES

Form	Liquid
Buffer	1x TBS (pH7.4), 1% BSA, 40% Glycerol
Preservative	0.05% Sodium azide
Storage	Store as concentrated solution. Centrifuge briefly prior to opening vial. For short-term storage (1-2 weeks), store at 4°C. For long-term storage, aliquot and store at -20°C or below. Avoid multiple freeze-thaw cycles.
Concentration	1 mg/ml (Please refer to the vial label for the specific concentration.)
Immunogen	Recombinant protein
Purification	Protein A purified
Conjugation	Unconjugated

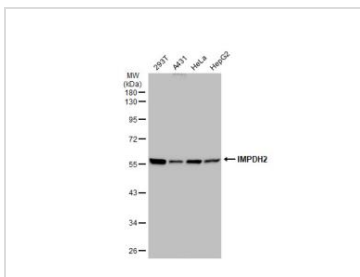
Note

For laboratory research use only. Not for any clinical, therapeutic, or diagnostic use in humans or animals. Not for animal or human consumption.

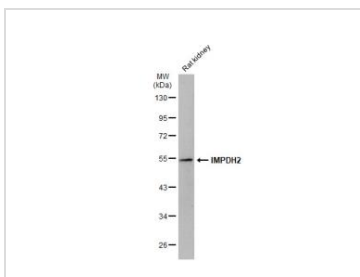
Purchasers shall not, and agree not to enable third parties to, analyze, copy, reverse engineer or otherwise attempt to determine the structure or sequence of the product.



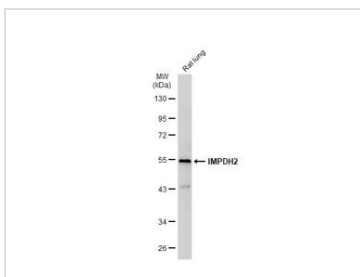
For full product information, images and publications, please visit our [website](#).

DATA IMAGES

GTX01127 WB Image

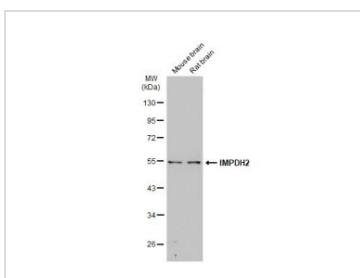
Various whole cell extracts (30 µg) were separated by 10% SDS-PAGE, and the membrane was blotted with IMPDH2 antibody [JE40-87] (GTX01127) diluted at 1:500. The HRP-conjugated anti-rabbit IgG antibody (GTX213110-01) was used to detect the primary antibody.


GTX01127 WB Image

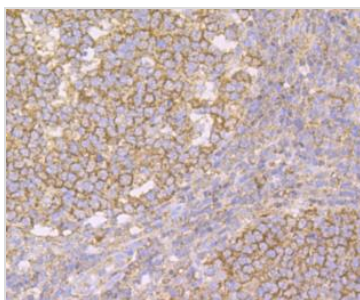
Rat tissue extract (50 µg) was separated by 10% SDS-PAGE, and the membrane was blotted with IMPDH2 antibody [JE40-87] (GTX01127) diluted at 1:1000. The HRP-conjugated anti-rabbit IgG antibody (GTX213110-01) was used to detect the primary antibody.


GTX01127 WB Image

Rat tissue extract (50 µg) was separated by 10% SDS-PAGE, and the membrane was blotted with IMPDH2 antibody [JE40-87] (GTX01127) diluted at 1:1000. The HRP-conjugated anti-rabbit IgG antibody (GTX213110-01) was used to detect the primary antibody.


GTX01127 WB Image

Various tissue extracts (50 µg) were separated by 10% SDS-PAGE, and the membrane was blotted with IMPDH2 antibody [JE40-87] (GTX01127) diluted at 1:1000. The HRP-conjugated anti-rabbit IgG antibody (GTX213110-01) was used to detect the primary antibody, and the signal was developed with Trident ECL plus-Enhanced.


GTX01127 IHC-P Image

IHC-P analysis of human tonsil tissue section using GTX01127 IMPDH2 antibody [JE40-87].



For full product information, images and publications, please visit our [website](https://www.genetex.com).