

## ARID2 antibody

**Cat. No. GTX01135**

<b>Host</b>	Rabbit
<b>Clonality</b>	Polyclonal
<b>Isotype</b>	IgG
<b>Applications</b>	WB, IHC-P
<b>Reactivity</b>	Human, Mouse, Rat

**Package**  
100 µg

## Applications

**Application Note**

\*Optimal dilutions/concentrations should be determined by the researcher.

Suggested dilution	Recommended dilution
WB	0.1-0.5µg/ml
IHC-P	0.5-1µg/ml

Not tested in other applications.

**Calculated MW** 197 kDa. ([Note](#))

**Product Note** Superfamily members of ARID2 are not reactive to this antibody.

## Properties

<b>Form</b>	Liquid
<b>Buffer</b>	4mg Trehalose, 0.9mg NaCl, 0.2mg Na <sub>2</sub> HPO <sub>4</sub>
<b>Preservative</b>	0.05mg Sodium azide
<b>Storage</b>	Store as concentrated solution. Centrifuge briefly prior to opening vial. For short-term storage (1-2 weeks), store at 4°C. For long-term storage, aliquot and store at -20°C or below. Avoid multiple freeze-thaw cycles.
<b>Concentration</b>	0.5 mg/ml (Please refer to the vial label for the specific concentration.)
<b>Immunogen</b>	A synthetic peptide corresponding to a sequence of human ARID2 (DERRKGLAFLDELRFHHSR).
<b>Purification</b>	Purified by antigen-affinity chromatography
<b>Conjugation</b>	Unconjugated

**Note**

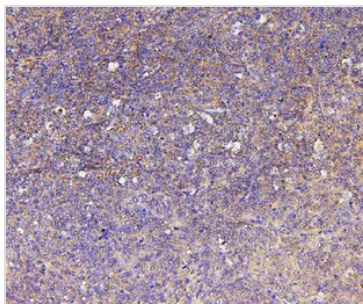
For laboratory research use only. Not for any clinical, therapeutic, or diagnostic use in humans or animals. Not for animal or human consumption.

Purchasers shall not, and agree not to enable third parties to, analyze, copy, reverse engineer or otherwise attempt to determine the structure or sequence of the product.



For full product information, images and publications, please visit our [website](#).

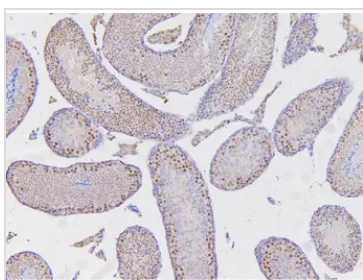
## DATA IMAGES

**GTX01135 IHC-P Image**

IHC-P analysis of human sarcoma tissue using GTX01135 ARID2 antibody.

Antigen retrieval : Heat mediated antigen retrieval was performed in citrate buffer (pH6, epitope retrieval solution) for 20 mins

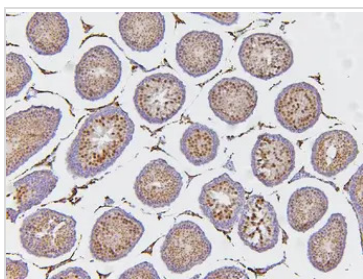
Dilution : 1µg/ml

**GTX01135 IHC-P Image**

IHC-P analysis of mouse testis tissue using GTX01135 ARID2 antibody.

Antigen retrieval : Heat mediated antigen retrieval was performed in citrate buffer (pH6, epitope retrieval solution) for 20 mins

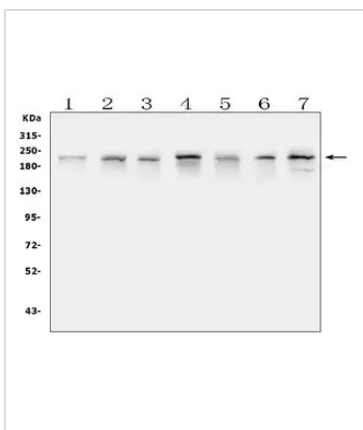
Dilution : 1µg/ml

**GTX01135 IHC-P Image**

IHC-P analysis of rat testis tissue using GTX01135 ARID2 antibody.

Antigen retrieval : Heat mediated antigen retrieval was performed in citrate buffer (pH6, epitope retrieval solution) for 20 mins

Dilution : 1µg/ml

**GTX01135 WB Image**

WB analysis of various sample lysates using GTX01135 ARID2 antibody.

Lane 1 : THP-1 whole cell lysates

Lane 2 : K562 whole cell lysates

Lane 3 : Caco-2 whole cell lysates

Lane 4 : HL-60 whole cell lysates

Lane 5 : A549 whole cell lysates

Lane 6 : rat testicular issue lysates

Lane 7 : mouse testicular issue lysates

Dilution : 0.5µg/ml

Loading : 50µg of sample under reducing conditions



For full product information, images and publications, please visit our [website](#).