

## MLH1 antibody [SP08-04]

**Cat. No. GTX01140**

<b>Host</b>	Rabbit
<b>Clonality</b>	Monoclonal
<b>Isotype</b>	IgG
<b>Applications</b>	WB, FCM
<b>Reactivity</b>	Human

**Package**  
100 µl

## Applications

**Application Note**

\*Optimal dilutions/concentrations should be determined by the researcher.

Suggested dilution	Recommended dilution
WB	1:1000
FCM	1:50-1:100

Not tested in other applications.

**Calculated MW** 85 kDa. ([Note](#))

## Properties

<b>Form</b>	Liquid
<b>Buffer</b>	TBS, 1% BSA, 40% Glycerol
<b>Preservative</b>	0.05% Sodium azide
<b>Storage</b>	Store as concentrated solution. Centrifuge briefly prior to opening vial. For short-term storage (1-2 weeks), store at 4°C. For long-term storage, aliquot and store at -20°C or below. Avoid multiple freeze-thaw cycles.
<b>Concentration</b>	1 mg/ml (Please refer to the vial label for the specific concentration.)
<b>Immunogen</b>	Recombinant protein
<b>Purification</b>	Protein A purified
<b>Conjugation</b>	Unconjugated

**Note**

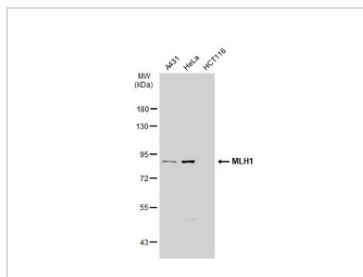
For laboratory research use only. Not for any clinical, therapeutic, or diagnostic use in humans or animals. Not for animal or human consumption.

Purchasers shall not, and agree not to enable third parties to, analyze, copy, reverse engineer or otherwise attempt to determine the structure or sequence of the product.



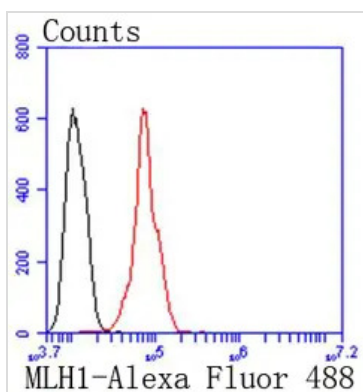
For full product information, images and publications, please visit our [website](#).

DATA IMAGES



**GTX01140 WB Image**

Various whole cell extracts (30 µg) were separated by 7.5% SDS-PAGE, and the membrane was blotted with MLH1 antibody [SP08-04] (GTX01140) diluted at 1:500. The HRP-conjugated anti-rabbit IgG antibody (GTX213110-01) was used to detect the primary antibody.



**GTX01140 FCM Image**

FACS analysis of HeLa cells using GTX01140 MLH1 antibody [SP08-04].

Red : primary antibody  
 Black : unlabelled control  
 Dilution : 1:50



For full product information, images and publications, please visit our [website](#).