

CDC2 antibody [SM01-44]

Cat. No. GTX01143

Host	Rabbit
Clonality	Monoclonal
Isotype	IgG
Applications	WB, ICC/IF, IHC-P, FCM
Reactivity	Human

Package
100 µl

Applications

Application Note

*Optimal dilutions/concentrations should be determined by the researcher.

Suggested dilution	Recommended dilution
WB	1:1000-1:5000
ICC/IF	1:50-1:200
IHC-P	1:50-1:200
FCM	1:50-1:100

Not tested in other applications.

Calculated MW 34 kDa. ([Note](#))

Properties

Form	Liquid
Buffer	TBS, 1% BSA, 40% Glycerol
Preservative	0.05% Sodium azide
Storage	Store as concentrated solution. Centrifuge briefly prior to opening vial. For short-term storage (1-2 weeks), store at 4°C. For long-term storage, aliquot and store at -20°C or below. Avoid multiple freeze-thaw cycles.
Concentration	1 mg/ml (Please refer to the vial label for the specific concentration.)
Immunogen	Recombinant protein
Purification	Protein A purified
Conjugation	Unconjugated

Note

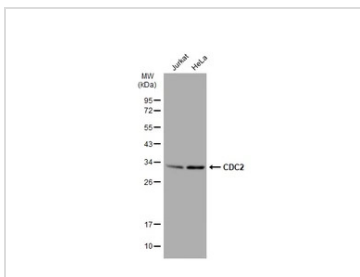
For laboratory research use only. Not for any clinical, therapeutic, or diagnostic use in humans or animals. Not for animal or human consumption.

Purchasers shall not, and agree not to enable third parties to, analyze, copy, reverse engineer or otherwise attempt to determine the structure or sequence of the product.

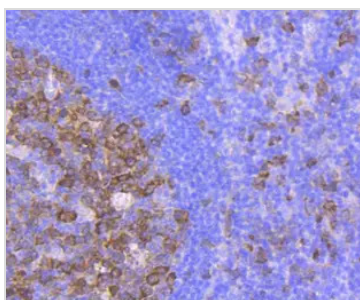


For full product information, images and publications, please visit our [website](#).

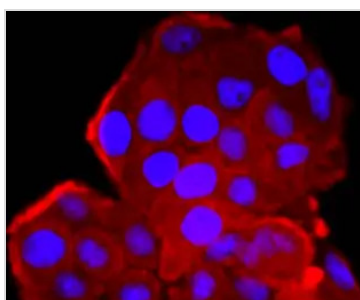
DATA IMAGES

**GTX01143 WB Image**

Various whole cell extracts (30 μ g) were separated by 12% SDS-PAGE, and the membrane was blotted with CDC2 antibody [SM01-44] (GTX01143) diluted at 1:500. The HRP-conjugated anti-rabbit IgG antibody (GTX213110-01) was used to detect the primary antibody.

**GTX01143 IHC-P Image**

IHC-P analysis of human tonsil tissue section using GTX01143 CDC2 antibody [SM01-44].

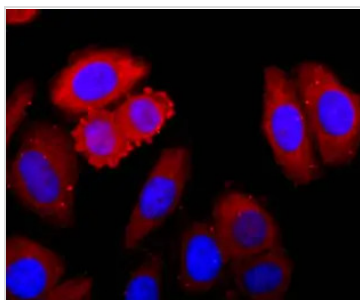
**GTX01143 ICC/IF Image**

ICC/IF analysis of PFA-fixed HeLa cells using GTX01143 CDC2 antibody [SM01-44].

Red : primary antibody

Blue : DAPI

Permeabilization : 0.25% Triton X-100 in PBS

**GTX01143 ICC/IF Image**

ICC/IF analysis of PFA-fixed HepG2 cells using GTX01143 CDC2 antibody [SM01-44].

Red : primary antibody

Blue : DAPI

Permeabilization : 0.25% Triton X-100 in PBS



For full product information, images and publications, please visit our [website](#).