

IQGAP1 antibody [JG38-74]

Cat. No. GTX01158

Host	Rabbit
Clonality	Monoclonal
Isotype	IgG
Application	WB, ICC/IF, IHC-P, FACS
Reactivity	Human, Mouse

Package
100 µl

APPLICATION

Application Note

*Optimal dilutions/concentrations should be determined by the researcher.

Suggested dilution	Recommended dilution
WB	1:500-1:2000
ICC/IF	1:50-1:200
IHC-P	1:50-1:200
FACS	1:50-1:100

Not tested in other applications.

Calculated MW 189 kDa. ([Note](#))

PROPERTIES

Form	Liquid
Buffer	1x TBS (pH7.4), 1% BSA, 40% Glycerol
Preservative	0.05% Sodium azide
Storage	Store as concentrated solution. Centrifuge briefly prior to opening vial. For short-term storage (1-2 weeks), store at 4°C. For long-term storage, aliquot and store at -20°C or below. Avoid multiple freeze-thaw cycles.
Concentration	1 mg/ml (Please refer to the vial label for the specific concentration.)
Immunogen	Recombinant protein
Purification	Protein A purified
Conjugation	Unconjugated

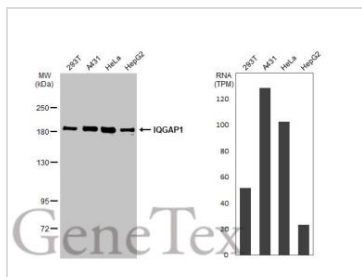
Note

For laboratory research use only. Not for any clinical, therapeutic, or diagnostic use in humans or animals. Not for animal or human consumption.

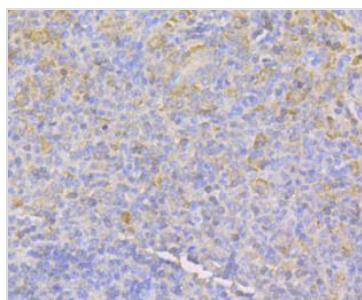
Purchasers shall not, and agree not to enable third parties to, analyze, copy, reverse engineer or otherwise attempt to determine the structure or sequence of the product.



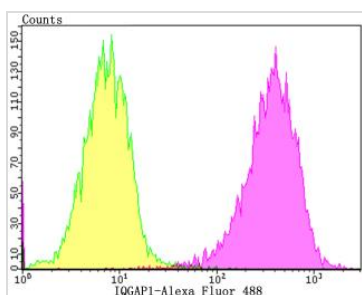
For full product information, images and publications, please visit our [website](#).

DATA IMAGES

GTX01158 WB Image

Various whole cell extracts (30 µg) were separated by 5% SDS-PAGE, and the membrane was blotted with IQGAP1 antibody [JG38-74] (GTX01158) diluted at 1:500. The HRP-conjugated anti-rabbit IgG antibody (GTX213110-01) was used to detect the primary antibody. Corresponding RNA expression data for the same cell lines are based on Human Protein Atlas program.


GTX01158 IHC-P Image

IHC-P analysis of human spleen tissue section using GTX01158 IQGAP1 antibody [JG38-74].

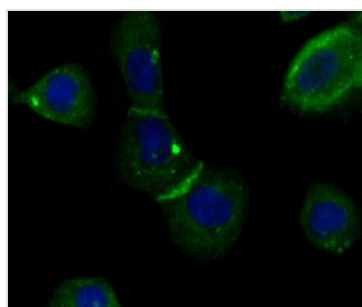

GTX01158 FACS Image

FACS analysis of SiHa cells using GTX01158 IQGAP1 antibody [JG38-74].

Purple : primary antibody

Yellow : unlabelled control

Dilution : 1:100


GTX01158 ICC/IF Image

ICC/IF analysis of PFA-fixed A431 cells using GTX01158 IQGAP1 antibody [JG38-74].

Green : primary antibody

Blue : DAPI

Permeabilization : 0.25% Triton X-100 in PBS



For full product information, images and publications, please visit our [website](https://www.genetex.com).