

ACE2 antibody [SN0754]

Cat. No. GTX01160

| | |
|--------------|---|
| Host | Rabbit |
| Clonality | Monoclonal |
| Isotype | IgG |
| Applications | WB, ICC/IF, IHC-P |
| Reactivity | Human, Mouse, Rat, African green monkey |

References (14)

Package

100 µl

Applications

Application Note

*Optimal dilutions/concentrations should be determined by the researcher.

| Suggested dilution | Recommended dilution |
|--------------------|----------------------|
| WB | 1:500~1:5000 |
| ICC/IF | 1:100-1:500 |
| IHC-P | 1:50-1:200 |

Not tested in other applications.

| | |
|-------------------|--|
| Calculated MW | 92 kDa. (Note) |
| Observed MW (kDa) | 130 kDa. The observed M.W. is based on the following publication. PMID: 24417403 |
| Product Note | KO/KD validation is based on published data (PMID: 35231079). |

Properties

| | |
|---------------|--|
| Form | Liquid |
| Buffer | TBS, 1% BSA, 40% Glycerol |
| Preservative | 0.05% Sodium azide |
| Storage | Store as concentrated solution. Centrifuge briefly prior to opening vial. For short-term storage (1-2 weeks), store at 4°C. For long-term storage, aliquot and store at -20°C or below. Avoid multiple freeze-thaw cycles. |
| Concentration | 1 mg/ml (Please refer to the vial label for the specific concentration.) |
| Immunogen | Synthetic peptide within Human ACE2 aa 200-230. |
| Purification | Protein A purified |
| Conjugation | Unconjugated |

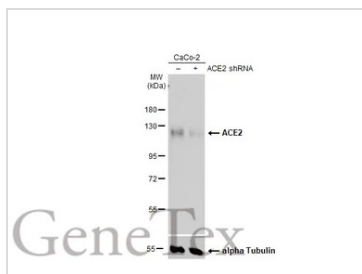


For full product information, images and publications, please visit our [website](#).

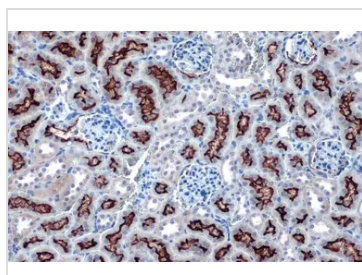
For laboratory research use only. Not for any clinical, therapeutic, or diagnostic use in humans or animals. Not for animal or human consumption.

Note

Purchasers shall not, and agree not to enable third parties to, analyze, copy, reverse engineer or otherwise attempt to determine the structure or sequence of the product.

DATA IMAGES

GTx01160 WB Image

Non-transfected (–) and transfected (+) Caco-2 whole cell extracts (30 µg) were separated by 7.5% SDS-PAGE, and the membrane was blotted with ACE2 antibody [SN0754] (GTx01160) diluted at 1:500. The HRP-conjugated anti-rabbit IgG antibody (GTx213110-01) was used to detect the primary antibody, and the signal was developed with Trident ECL plus-Enhanced.

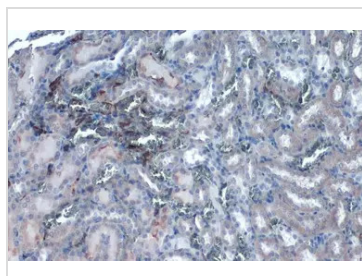

GTx01160 IHC-P Image

ACE2 antibody [SN0754] detects ACE2 protein at cell membrane by immunohistochemical analysis.

Sample: Paraffin-embedded mouse kidney.

ACE2 stained by ACE2 antibody [SN0754] (GTx01160) diluted at 1:2000.

Antigen Retrieval: Citrate buffer, pH 6.0, 15 min

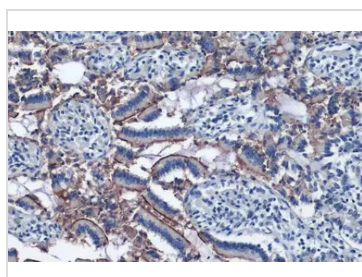

GTx01160 IHC-P Image

ACE2 antibody [SN0754] detects ACE2 protein at cell membrane by immunohistochemical analysis.

Sample: Paraffin-embedded rat kidney.

ACE2 stained by ACE2 antibody [SN0754] (GTx01160) diluted at 1:2000.

Antigen Retrieval: Citrate buffer, pH 6.0, 15 min


GTx01160 IHC-P Image

ACE2 antibody [SN0754] detects ACE2 protein at cell membrane by immunohistochemical analysis.

Sample: Paraffin-embedded human intestine.

ACE2 stained by ACE2 antibody [SN0754] (GTx01160) diluted at 1:2000.

Antigen Retrieval: Citrate buffer, pH 6.0, 15 min



For full product information, images and publications, please visit our [website](https://www.genetex.com).