

Bcl-2 antibody [GT1213]

Cat. No. GTX01194

Host	Rabbit
Clonality	Monoclonal
Isotype	IgG
Application	WB, IHC-P, IP
Reactivity	Human, Mouse

Package
100 µl

APPLICATION

Application Note

*Optimal dilutions/concentrations should be determined by the researcher.

Suggested dilution	Recommended dilution
WB	1:500 - 1:2000
IHC-P	1:50 - 1:200
IP	1:50 - 1:200

Not tested in other applications.

Calculated MW 26 kDa. ([Note](#))

PROPERTIES

Form	Liquid
Buffer	PBS, 50% Glycerol
Preservative	0.02% Sodium azide
Storage	Store as concentrated solution. Centrifuge briefly prior to opening vial. For short-term storage (1-2 weeks), store at 4°C. For long-term storage, aliquot and store at -20°C or below. Avoid multiple freeze-thaw cycles.
Concentration	Batch dependent (Please refer to the vial label for the specific concentration.)
Immunogen	A synthesized peptide derived from human Bcl-2.
Purification	Purified by affinity chromatography
Conjugation	Unconjugated

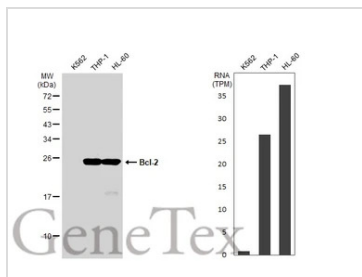
Note

For laboratory research use only. Not for any clinical, therapeutic, or diagnostic use in humans or animals. Not for animal or human consumption.

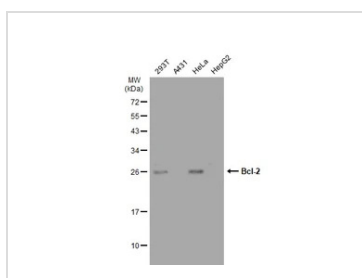
Purchasers shall not, and agree not to enable third parties to, analyze, copy, reverse engineer or otherwise attempt to determine the structure or sequence of the product.



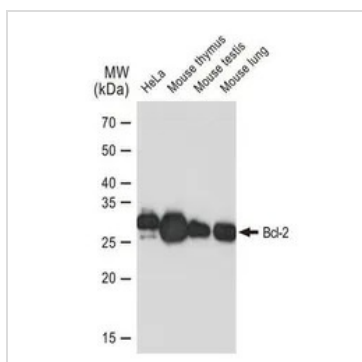
For full product information, images and publications, please visit our [website](#).

DATA IMAGES

GTx01194 WB Image

Various whole cell extracts (30 µg) were separated by 12% SDS-PAGE, and the membrane was blotted with Bcl-2 antibody [GT1213] (GTx01194) diluted at 1:500. The HRP-conjugated anti-rabbit IgG antibody (GTx213110-01) was used to detect the primary antibody. Corresponding RNA expression data for the same cell lines are based on Human Protein Atlas program.


GTx01194 WB Image

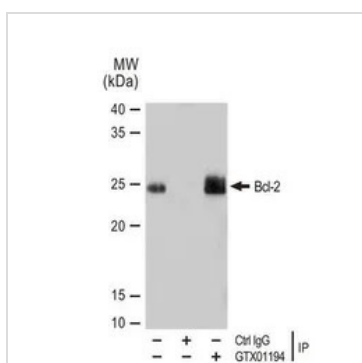
Various whole cell extracts (30 µg) were separated by 12% SDS-PAGE, and the membrane was blotted with Bcl-2 antibody [GT1213] (GTx01194) diluted at 1:500. The HRP-conjugated anti-rabbit IgG antibody (GTx213110-01) was used to detect the primary antibody.


GTx01194 WB Image

WB analysis of various samples using GTx01194 Bcl-2 antibody [GT1213].

Dilution : 1:1000

Loading : 25µg


GTx01194 IP Image

IP analysis of Mouse lung tissue lysate using GTx01194 Bcl-2 antibody [GT1213].

Total protein amount : 200µg

IP antibody : 3µg

Dilution : 1:1000



For full product information, images and publications, please visit our [website](https://www.genetex.com).