

KDM5A / Jarid1A / RBBP2 antibody [9A6]

Cat. No. GTX01204

Host	Mouse
Clonality	Monoclonal
Isotype	IgG2a
Applications	WB
Reactivity	Human, Mouse

Package
100 µg

Applications

Application Note

*Optimal dilutions/concentrations should be determined by the researcher.

Suggested dilution	Recommended dilution
WB	~1 µg/ml
Not tested in other applications.	

Calculated MW 192 kDa. ([Note](#))

Properties

Form	Liquid
Buffer	Filter-sterilized PBS, 50% Glycerol
Preservative	No preservatives
Storage	Store as concentrated solution. Centrifuge briefly prior to opening vial. For short-term storage (1-2 weeks), store at 4°C. For long-term storage, aliquot and store at -20°C or below. Avoid multiple freeze-thaw cycles.
Concentration	1 mg/ml (Please refer to the vial label for the specific concentration.)
Immunogen	A synthetic peptide corresponding to human RBP2, amino acids 1416-1434
Purification	Purified IgG From culture supernant
Conjugation	Unconjugated

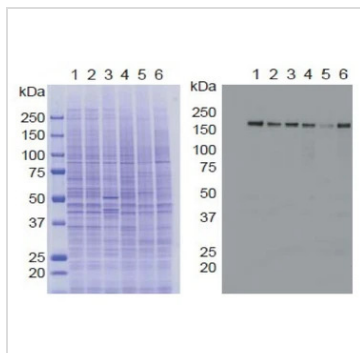
Note

For laboratory research use only. Not for any clinical, therapeutic, or diagnostic use in humans or animals. Not for animal or human consumption.

Purchasers shall not, and agree not to enable third parties to, analyze, copy, reverse engineer or otherwise attempt to determine the structure or sequence of the product.



For full product information, images and publications, please visit our [website](#).

DATA IMAGES

GTx01204 WB Image

WB analysis of various samples using GTx01204 KDM5A / Jarid1A / RBBP2 antibody [9A6] (right).

Left : SDS-PAGE with CBB staining

Lane 1 : HeLa control siRNA

Lane 2 : HeLa RBP2 siRNA

Lane 3 : MCF-7 whole cell lysate

Lane 4 : U2OS whole cell lysate

Lane 5 : NIH-3T3 whole cell lysate

Lane 6 : J1 (mouse ES) whole cell lysate



For full product information, images and publications, please visit our [website](https://www.genetex.com).