

Human BCHE protein, His tag (active)

Cat. No. GTX01209-pro
Application Functional Assay

Species Human

Package

50 µg

APPLICATION

Application Note

Measured by its ability to cleave Butyrylthiocholine. The specific activity is > 50,000 pmoles/min/µg.

Observed MW 85-95 kDa.

PROPERTIES

Form Lyophilized powder

Buffer Batch dependent (please contact us for details)

Storage Store at -20°C or below. After reconstitution, keep as concentrated solution. Avoid freeze-thaw cycles.

Region/Sequence C-terminal poly His tagged; Met1-Leu602 of Human BCHE protein (NP_000046.1)

Expression System HEK293 cells

Purity > 97% by SDS-PAGE.

Endotoxin < 1.0 EU/µg (determined by LAL method)

Conjugation Unconjugated

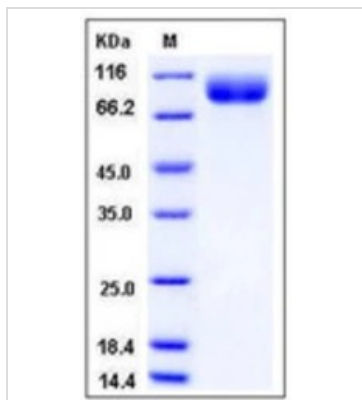
Note For laboratory research use only. Not for any clinical, therapeutic, or diagnostic use in humans or animals. Not for animal or human consumption.

Purchasers shall not, and agree not to enable third parties to, analyze, copy, reverse engineer or otherwise attempt to determine the structure or sequence of the product.



For full product information, images and publications, please visit our [website](#).

DATA IMAGES



GTX01209-pro Image

SDS-PAGE of 5 µg GTX01209-pro Human BCHE protein, His tag (active).



For full product information, images and publications, please visit our [website](#).