

Human Cathepsin D protein, His tag

Cat. No. GTX01210-pro**Application** Functional Assay**Species** Human**Package**

50 µg

APPLICATION

Application Note

Measured by the ability of Human Cathepsin D protein (active) (GTX01210-pro) to bind biotinylated Human Cathepsin S protein (active) (GTX01212-pro) in a functional ELISA.

Observed MW 40-110 kDa.

PROPERTIES

Form Lyophilized powder**Buffer** Batch dependent (please contact us for details)**Storage** Store at -20°C or below. After reconstitution, keep as concentrated solution. Avoid freeze-thaw cycles.**Region/Sequence** C-terminal poly His tagged; Met1-Leu412 of Human Cathepsin D protein (P07339)**Expression System** HEK293 cells**Purity** > 97% by SDS-PAGE.**Endotoxin** < 1.0 EU/µg (determined by LAL method)**Conjugation** Unconjugated

Note

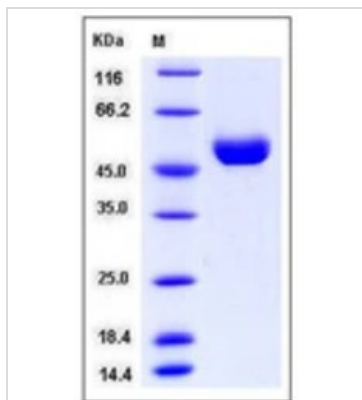
For laboratory research use only. Not for any clinical, therapeutic, or diagnostic use in humans or animals. Not for animal or human consumption.

Purchasers shall not, and agree not to enable third parties to, analyze, copy, reverse engineer or otherwise attempt to determine the structure or sequence of the product.



For full product information, images and publications, please visit our [website](#).

DATA IMAGES



GTX01210-pro Image

SDS-PAGE of 5 μ g GTX01210-pro Human Cathepsin D protein.



For full product information, images and publications, please visit our [website](https://www.genetex.com).