

# Human Cathepsin L protein, His tag

**Cat. No. GTX01211-pro**

<b>Application</b>	Functional Assay
<b>Species</b>	Human

**Package**  
50 µg

## APPLICATION

### Application Note

Measured by its binding ability in a functional ELISA. Immobilized human CD74 protein at 5 µg/ml (100 µl/well) can bind biotinylated human CTSL1 protein with a linear range of 3.2-400 ng/ml.

**Observed MW** 37 kDa.

## PROPERTIES

<b>Form</b>	Lyophilized powder
<b>Buffer</b>	Batch dependent (please contact us for details)
<b>Storage</b>	Store at -20°C or below. After reconstitution, keep as concentrated solution. Avoid freeze-thaw cycles.
<b>Region/Sequence</b>	C-terminal poly His tagged; Met1-Val333 of Human Cathepsin L protein (NP_001903.1)
<b>Expression System</b>	HEK293 cells
<b>Purity</b>	> 90% by SDS-PAGE.
<b>Endotoxin</b>	< 1.0 EU/µg (determined by LAL method)
<b>Conjugation</b>	Unconjugated

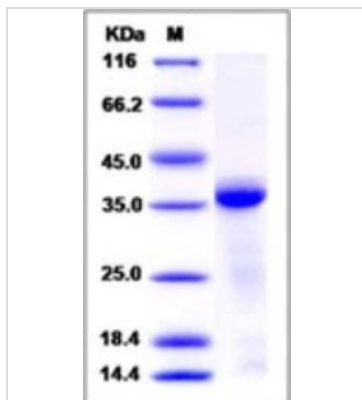
**Note** For laboratory research use only. Not for any clinical, therapeutic, or diagnostic use in humans or animals. Not for animal or human consumption.

Purchasers shall not, and agree not to enable third parties to, analyze, copy, reverse engineer or otherwise attempt to determine the structure or sequence of the product.



For full product information, images and publications, please visit our [website](#).

## DATA IMAGES



### GTX01211-pro Image

SDS-PAGE of 5  $\mu$ g GTX01211-pro Human Cathepsin L protein.



For full product information, images and publications, please visit our [website](#).