

## Human Cathepsin S protein, His tag (active)

Cat. No. GTX01212-pro

**Application** Functional Assay**Species** Human**Package**

50 µg

## APPLICATION

## Application Note

1. Measured by its ability to cleave a fluorogenic peptide substrate, (7-methoxycoumarin-4-yl) acetyl-Arg-Pro-Lys-Pro-Val-Glu-Nva-Trp-Arg-Lys (2, 4-dinitrophenyl)-NH<sub>2</sub>. Cleavage of (7-methoxycoumarin-4-yl) acetyl-Arg-Pro-Lys-Pro-Val-Glu-Nva-Trp-Arg-Lys (2, 4-dinitrophenyl)-NH<sub>2</sub> can be measured using excitation and emission wavelength at 320 nm and 405 nm, respectively. The specific activity is > 300 pmoles/min/µg.

Note: The enzyme achieves its activity under acidic pH).

2. Measured by its ability to bind Human Cathepsin S protein (active) (GTX01210-pro) in a functional ELISA.

**Observed MW** 37 kDa.

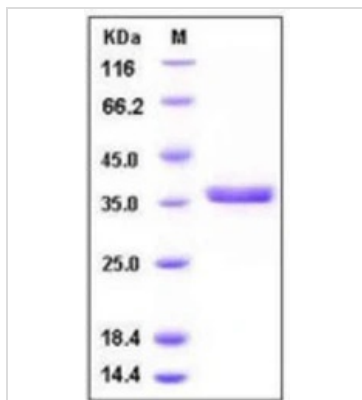
## PROPERTIES

**Form** Lyophilized powder**Buffer** Batch dependent (please contact us for details)**Storage** Store at -20°C or below. After reconstitution, keep as concentrated solution. Avoid freeze-thaw cycles.**Region/Sequence** C-terminal poly His tagged; Met1-Ile331 of Human Cathepsin S protein (NP\_004070.3)**Expression System** HEK293 cells**Purity** > 90% by SDS-PAGE.**Endotoxin** < 1.0 EU/µg (determined by LAL method)**Conjugation** Unconjugated**Note** For laboratory research use only. Not for any clinical, therapeutic, or diagnostic use in humans or animals. Not for animal or human consumption.

Purchasers shall not, and agree not to enable third parties to, analyze, copy, reverse engineer or otherwise attempt to determine the structure or sequence of the product.



For full product information, images and publications, please visit our [website](#).

**DATA IMAGES**

**GTX01212-pro Image**

SDS-PAGE of 5  $\mu$ g GTX01212-pro Human Cathepsin S protein, His tag (active).



For full product information, images and publications, please visit our [website](#).