

Human PSA protein, His tag (active)

Cat. No. GTX01214-pro

Application	Functional Assay
Species	Human

Package
50 µg

APPLICATION

Application Note

Measured by its ability to cleave the colorimetric peptide substrate, Succinyl-Arg-Pro-Tyr-p-Nitroanilide (Suc-RPY-pNA). The specific activity is > 100 pmoles/min/µg.

Note: The proenzyme needs to be activated by Thermolysin for an activated form.

Observed MW 35 kDa.

PROPERTIES

Form Lyophilized powder

Buffer Batch dependent (please contact us for details)

Storage Store at -20°C or below. After reconstitution, keep as concentrated solution. Avoid freeze-thaw cycles.

Region/Sequence C-terminal poly His tagged; Met1-Pro261 of Human PSA protein (P07288)

Expression System HEK293 cells

Purity > 95% by SDS-PAGE.

Endotoxin < 1.0 EU/µg (determined by LAL method)

Conjugation Unconjugated

Note

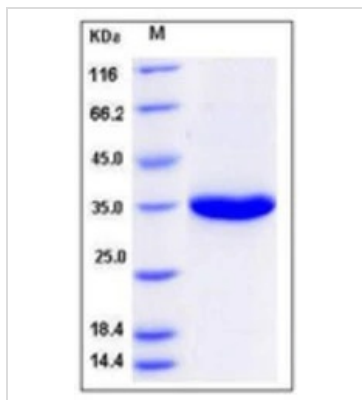
For laboratory research use only. Not for any clinical, therapeutic, or diagnostic use in humans or animals. Not for animal or human consumption.

Purchasers shall not, and agree not to enable third parties to, analyze, copy, reverse engineer or otherwise attempt to determine the structure or sequence of the product.



For full product information, images and publications, please visit our [website](#).

DATA IMAGES



GTX01214-pro Image

SDS-PAGE of 5 μ g GTX01214-pro Human PSA protein, His tag (active).



For full product information, images and publications, please visit our [website](https://www.genetex.com).