

Human alpha 1 Antitrypsin protein, His tag (active)

Cat. No. GTX01220-pro

Applications Functional Assay

Species Human

Package

100 µg

Applications

Application Note

Measured by its ability to inhibit trypsin cleavage of a fluorogenic peptide substrate, Mca-RPKPVE-Nval-WRK(Dnp)-NH₂. The IC₅₀ value is < 3.0 nM, as measured in 100µl reaction mixture containing 1.25 ng trypsin, 10 µM substrate, 50 mM Tris, 10 mM CaCl₂, 0.15 M NaCl, pH 7.5.

Observed MW (kDa) 55-60 kDa.

Properties

Form Lyophilized powder

Buffer Batch dependent (please contact us for details)

Storage Store at -20°C or below. After reconstitution, keep as concentrated solution. Avoid freeze-thaw cycles.

Region/Sequence C-terminal poly His tagged; Met1-Lys418 of Human alpha 1 Antitrypsin protein (NP_000286.3)

Expression System HEK293 cells

Purity > 97% by SDS-PAGE.

Endotoxin < 1.0 EU/µg (determined by LAL method)

Conjugation Unconjugated

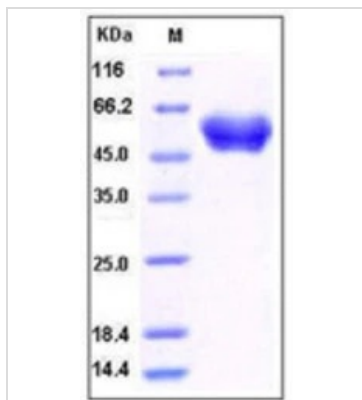
Note For laboratory research use only. Not for any clinical, therapeutic, or diagnostic use in humans or animals. Not for animal or human consumption.

Purchasers shall not, and agree not to enable third parties to, analyze, copy, reverse engineer or otherwise attempt to determine the structure or sequence of the product.



For full product information, images and publications, please visit our [website](#).

DATA IMAGES



GTX01220-pro Image

SDS-PAGE of 5 µg GTX01220-pro Human alpha 1 Antitrypsin protein, His tag (active).



For full product information, images and publications, please visit our [website](https://www.genetex.com).