

Human PD-L1 protein, mouse IgG1 Fc tag (active)

Cat. No. GTX01279-pro

Applications Functional Assay**Species** Human**Package**

100 µg

Applications

Application Note

1. Measured by its binding ability in a functional ELISA. Immobilized recombinant Human PD1-His protein at 10 µg/ml (100 µl/well) can bind Human PD-L1 protein (active) (GTX01279-pro) with a linear range of 1.28-20 µg/ml.
2. Measured by its ability to inhibit anti-CD3 antibody induced IL-2 secretion in human T cell lymphocytes. The ED₅₀ for this effect is typically 0.4-3 µg/ml.

Observed MW (kDa) 51.7 kDa.

Properties

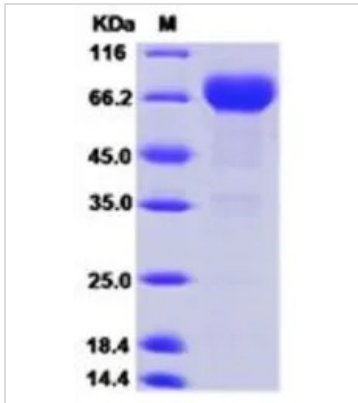
Form Lyophilized powder**Buffer** Batch dependent (please contact us for details)**Storage** Store at -20°C or below. After reconstitution, keep as concentrated solution. Avoid freeze-thaw cycles.**Region/Sequence** C-terminal mouse IgG1-Fc tagged; Met1-Thr239 of Human PD-L1 protein (NP_054862.1)**Expression System** HEK293 cells**Purity** > 95% by SDS-PAGE.**Endotoxin** < 1.0 EU/µg (determined by LAL method)**Conjugation** Unconjugated**Note**

For laboratory research use only. Not for any clinical, therapeutic, or diagnostic use in humans or animals. Not for animal or human consumption.

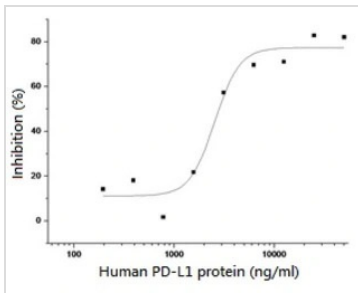
Purchasers shall not, and agree not to enable third parties to, analyze, copy, reverse engineer or otherwise attempt to determine the structure or sequence of the product.



For full product information, images and publications, please visit our [website](#).

DATA IMAGES

GTX01279-pro Image

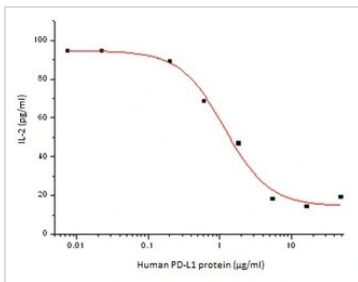
SDS-PAGE of 5 µg GTX01279-pro Human PD-L1 protein, mouse IgG1 Fc tag (active).


GTX01279-pro Functional Assay Image

The protein binding activity was measured in a functional ELISA analysis of GTX01279-pro Human PD-L1 protein which can bind immobilized recombinant Human PD1-His protein.

Immobilized recombinant Human PD1-His protein : 10 µg/ml (100 µl/well)

GTX01279-pro : 1.28-20 µg/ml


GTX01279-pro Functional Assay Image

The protein activity of GTX01279-pro Human PD-L1 protein was measured by its ability to inhibit anti-CD3 antibody (2 µg/ml) induced IL-2 secretion in human T lymphocytes.

ED₅₀ : 0.4-3 µg/ml



For full product information, images and publications, please visit our [website](https://www.genetex.com).