

## Mouse HGF protein (active)

Cat. No. GTX01299-pro

**Applications** Functional Assay**Species** Mouse**Package**

100 µg, 20 µg

## Applications

## Application Note

1. Immobilized Mouse HGF protein (active) (GTX01299-pro) at 10 µg/ml (100 µl/well) can bind Mouse c-Met protein (active) (GTX01435-pro). The EC<sub>50</sub> of Mouse c-Met protein (active) (GTX01435-pro) is 0.05-0.12 µg/ml.
2. Measured by its ability to inhibit TGFβ1 activity on Mv-1-Lu cells. The ED<sub>50</sub> for this effect is typically 1-4 ng/ml.

**Calculated MW** 83 kDa. ( [Note](#) )**Observed MW (kDa)** 93 kDa.

## Properties

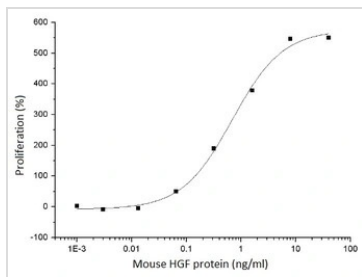
**Form** Lyophilized powder**Buffer** Batch dependent (please contact us for details)**Storage** Store at -20°C or below. After reconstitution, keep as concentrated solution. Avoid freeze-thaw cycles.**Region/Sequence** No tagged; Met1-Leu728 of Mouse HGF protein (Q08048-1)**Expression System** HEK293 cells**Purity** > 95% by SDS-PAGE.**Endotoxin** < 1.0 EU/µg (determined by LAL method)**Conjugation** Unconjugated**Note**

For laboratory research use only. Not for any clinical, therapeutic, or diagnostic use in humans or animals. Not for animal or human consumption.

Purchasers shall not, and agree not to enable third parties to, analyze, copy, reverse engineer or otherwise attempt to determine the structure or sequence of the product.

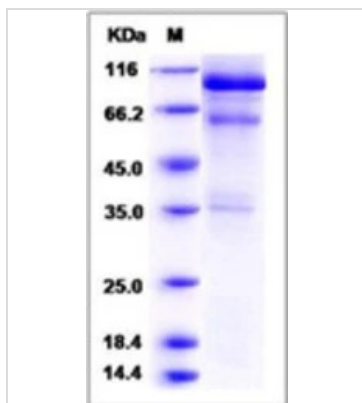


For full product information, images and publications, please visit our [website](#).

**DATA IMAGES**

**GTX01299-pro Functional Assay Image**

The protein activity of GTX01299-pro Mouse HGF protein was measured by its ability to inhibit TGFβ1 activity on Mv-1-lu cells.

ED<sub>50</sub> : 1-4 ng/ml


**GTX01299-pro Image**

SDS-PAGE of 5 µg GTX01299-pro Mouse HGF protein (active).



For full product information, images and publications, please visit our [website](https://www.genetex.com).