

Interferon gamma Receptor 1 antibody [062]

Cat. No. GTX01442

Host	Rabbit
Clonality	Monoclonal
Isotype	IgG
Application	ICC/IF, FACS
Reactivity	Mouse

Package
100 µl

APPLICATION

Application Note

*Optimal dilutions/concentrations should be determined by the researcher.

Suggested dilution	Recommended dilution
ICC/IF	1:20-1:100
FACS	1:25-1:100

Not tested in other applications.

Calculated MW 52 kDa. ([Note](#))

PROPERTIES

Form	Liquid
Buffer	Filter-sterilized PBS
Preservative	No preservative
Storage	Store as concentrated solution. Centrifuge briefly prior to opening vial. For short-term storage (1-2 weeks), store at 4°C. For long-term storage, aliquot and store at -20°C or below. Avoid multiple freeze-thaw cycles.
Concentration	Batch dependent (Please refer to the vial label for the specific concentration.)
Immunogen	Recombinant Mouse Interferon gamma Receptor 1 protein (GTX01442-pro)
Purification	Purified by Protein A
Conjugation	Unconjugated

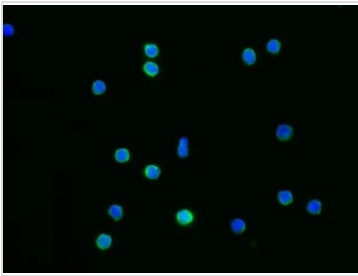
Note

For laboratory research use only. Not for any clinical, therapeutic, or diagnostic use in humans or animals. Not for animal or human consumption.

Purchasers shall not, and agree not to enable third parties to, analyze, copy, reverse engineer or otherwise attempt to determine the structure or sequence of the product.



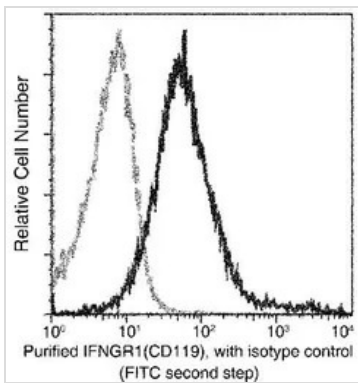
For full product information, images and publications, please visit our [website](#).

DATA IMAGES

GTx01442 ICC/IF Image

ICC/IF analysis of PFA-fixed mouse splenocytes using GTx01442 Interferon gamma Receptor 1 antibody [062].

Green : Primary antibody Blue : DAPI

Dilution : 1:60


GTx01442 FACS Image

FACS analysis of mouse splenocytes using GTx01442 Interferon gamma Receptor 1 antibody [062].

The fluorescence histograms were derived from gated events with the forward and side light-scatter characteristics of intact cells.



For full product information, images and publications, please visit our [website](#).