

## CD16 + CD32 antibody [2.4G2] (Biotin)

**Cat. No. GTX01453-02**

<b>Host</b>	Rat
<b>Clonality</b>	Monoclonal
<b>Isotype</b>	IgG2b
<b>Application</b>	FACS
<b>Reactivity</b>	Mouse

[Reference \( 283 \)](#)

**Package**

100 µg

### PRODUCT

#### Summary

The 2.4G2 antibody is specific for a common epitope found in the extracellular regions of mouse Fc-receptors Fc-gamma II (CD32) and Fc-gamma III (CD16). As these are receptors for the Fc portion of mouse IgG, they may also bind laboratory antibody preparations and products used in a variety of cell analysis protocols such as flow cytometry, immunohistochemistry and functional cell assays. The 2.4G2 antibody is therefore widely used as a pre-treatment reagent to block binding of specific antibodies of interest, e.g. fluorescently conjugated antibodies, to Fc receptors via their Fc domains and contributing to "non-specific" staining.

### APPLICATION

#### Application Note

\*Optimal dilutions/concentrations should be determined by the researcher.

Suggested dilution	Recommended dilution
FACS	Assay dependent
Not tested in other applications.	

**Calculated MW** 37 kDa. ( [Note](#) )

### PROPERTIES

<b>Form</b>	Liquid
<b>Buffer</b>	10mM NaH <sub>2</sub> PO <sub>4</sub> , 150mM NaCl, 0.1% Gelatin
<b>Preservative</b>	0.09% Sodium azide
<b>Storage</b>	Store as concentrated solution. Centrifuge briefly prior to opening vial. Store at 4°C. DO NOT FREEZE. Protect from light.
<b>Concentration</b>	0.5 mg/ml (Please refer to the vial label for the specific concentration.)
<b>Purification</b>	Purified by affinity chromatography From tissue culture supernatant
<b>Conjugation</b>	Biotin



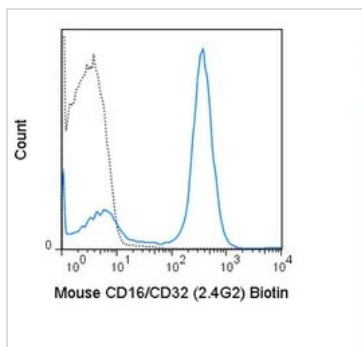
For full product information, images and publications, please visit our [website](#).

For laboratory research use only. Not for any clinical, therapeutic, or diagnostic use in humans or animals. Not for animal or human consumption.

## Note

Purchasers shall not, and agree not to enable third parties to, analyze, copy, reverse engineer or otherwise attempt to determine the structure or sequence of the product.

## DATA IMAGES



### GTx01453-02 FACS Image

FACS analysis of mouse C57Bl/6 splenocytes using GTx01453-02 CD16 + CD32 antibody [2.4G2] (Biotin).

Solid line : primary antibody

Dashed line : isotype control

antibody amount : 0.25  $\mu$ g (5  $\mu$ l)



For full product information, images and publications, please visit our [website](#).