

## CD16 + CD32 antibody [2.4G2] (PE)

Cat. No. GTX01453-08

<b>Host</b>	Rat
<b>Clonality</b>	Monoclonal
<b>Isotype</b>	IgG2b
<b>Applications</b>	FCM
<b>Reactivity</b>	Mouse

References ( 283 )  
 Package  
 100 µg

## PRODUCT

## Summary

The 2.4G2 antibody is specific for a common epitope found in the extracellular regions of mouse Fc-receptors Fc-gamma II (CD32) and Fc-gamma III (CD16). As these are receptors for the Fc portion of mouse IgG, they may also bind laboratory antibody preparations and products used in a variety of cell analysis protocols such as flow cytometry, immunohistochemistry and functional cell assays. The 2.4G2 antibody is therefore widely used as a pre-treatment reagent to block binding of specific antibodies of interest, e.g. fluorescently conjugated antibodies, to Fc receptors via their Fc domains and contributing to "non-specific" staining.

## Applications

## Application Note

\*Optimal dilutions/concentrations should be determined by the researcher.

Suggested dilution	Recommended dilution
FCM	Assay dependent

Not tested in other applications.

## Properties

<b>Form</b>	Liquid
<b>Buffer</b>	10mM NaH <sub>2</sub> PO <sub>4</sub> , 150mM NaCl, 0.1% Gelatin
<b>Preservative</b>	0.09% Sodium azide
<b>Storage</b>	Store as concentrated solution. Centrifuge briefly prior to opening vial. Store at 4°C. DO NOT FREEZE. Protect from light.
<b>Concentration</b>	0.2 mg/ml (Please refer to the vial label for the specific concentration.)
<b>Purification</b>	Purified by affinity chromatography From tissue culture supernatant
<b>Conjugation</b>	Phycoerythrin (PE) <a href="#">Wavelength</a>

## Note

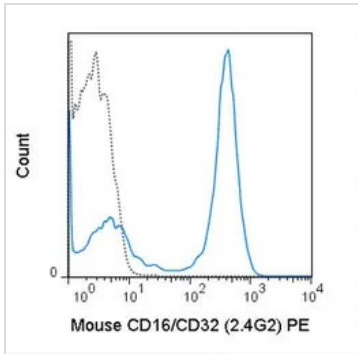
For laboratory research use only. Not for any clinical, therapeutic, or diagnostic use in humans or animals. Not for animal or human consumption.

Purchasers shall not, and agree not to enable third parties to, analyze, copy, reverse engineer or otherwise attempt to determine the structure or sequence of the product.



For full product information, images and publications, please visit our [website](#).

## DATA IMAGES

**GTX01453-08 FCM Image**

FACS analysis of mouse C57Bl/6 splenocytes using GTX01453-08 CD16 + CD32 antibody [2.4G2] (PE).

Solid line : primary antibody

Dashed line : isotype control

antibody amount : 0.125  $\mu$ g (5  $\mu$ l)



For full product information, images and publications, please visit our [website](#).