

CD161 antibody [HP-3G10] (APC)

Cat. No. GTX01454-07

Host	Mouse
Clonality	Monoclonal
Isotype	IgG1
Applications	FCM
Reactivity	Human, Baboon, Chimpanzee, Rhesus Monkey

References (174)
 Package
 100 test

PRODUCT

Summary

The HP-3G10 antibody is specific for human CD161, also known as NKR-P1A, a type II transmembrane lectin-like receptor and member of the killer cell lectin-like receptor (KLR) family. CD161 exists as a homodimer which is prominently expressed on natural killer (NK) and NKT cells, where it is proposed to regulate the function of both cell types. CD161 is also found on T cell subsets, including T regulatory cells (Tregs), memory/effector CD4+ T cells, and CD8+ T cells. Th17 cells have been demonstrated to co-express CD161, as surface IL-17A+ cells are contained within the CD161+ fraction of CD4 T cells, so that CD161 (in combination with CCR6) is often used as a marker for enrichment of Th17 cells. The HP-3G10 antibody may be used for flow cytometric analysis of CD161 on NK and NKT cells, as well as on various T cell subsets. The antibody is also reported to be cross-reactive with Baboon, Chimpanzee and Rhesus CD161.

Applications

Application Note

*Optimal dilutions/concentrations should be determined by the researcher.

Suggested dilution

Recommended dilution

FCM	0.25 µg (5 µl) for 10 ⁵ -10 ⁸ cells in 100 µl sample per test
-----	---

Not tested in other applications.

Properties

Form	Liquid
-------------	--------

Buffer	10mM NaH ₂ PO ₄ , 150mM NaCl, 0.1% Gelatin
---------------	--

Preservative	0.09% Sodium azide
---------------------	--------------------

Storage	Store as concentrated solution. Centrifuge briefly prior to opening vial. Store at 4°C. DO NOT FREEZE. Protect from light.
----------------	--

Concentration	0.05 mg/ml (Please refer to the vial label for the specific concentration.)
----------------------	---

Purification	Purified by affinity chromatography From tissue culture supernatant
---------------------	--

Conjugation	Allophycocyanin (APC) Wavelength
--------------------	--



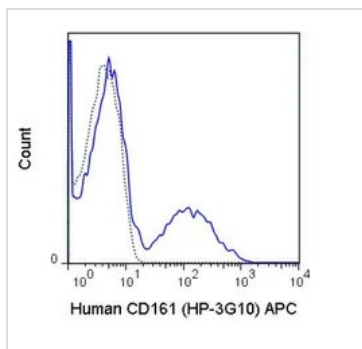
For full product information, images and publications, please visit our [website](#).

For laboratory research use only. Not for any clinical, therapeutic, or diagnostic use in humans or animals. Not for animal or human consumption.

Note

Purchasers shall not, and agree not to enable third parties to, analyze, copy, reverse engineer or otherwise attempt to determine the structure or sequence of the product.

DATA IMAGES

**GTX01454-07 FCM Image**

FACS analysis of human peripheral blood lymphocytes using GTX01454-07 CD161 antibody [HP-3G10] (APC).

Solid line : primary antibody

Dashed line : isotype control

antibody amount : 0.25 μ g (5 μ l)



For full product information, images and publications, please visit our [website](#).