

## CD3 antibody [17A2] (PE)

Cat. No. GTX01458-08

|                     |            |
|---------------------|------------|
| <b>Host</b>         | Rat        |
| <b>Clonality</b>    | Monoclonal |
| <b>Isotype</b>      | IgG2b      |
| <b>Applications</b> | FCM        |
| <b>Reactivity</b>   | Mouse      |

References ( 261 )

Package

100 µg

## PRODUCT

## Summary

The 17A2 antibody reacts with the mouse CD3 complex, comprised of CD3 epsilon, CD3 gamma and CD3 delta. These integral membrane protein chains assemble with additional chains of the T cell receptor (TCR), as well as CD3 zeta chain, to form the T cell receptor – CD3 complex. Together with co-receptors CD4 or CD8, the complex serves to recognize antigens bound to MHC molecules on antigen-presenting cells. Such interactions promote T cell receptor signaling (T cell activation) and can result in a number of cellular responses including proliferation, differentiation, production of cytokines or activation-induced cell death. CD3 is differentially expressed during thymocyte-to-T cell development and on all mature T cells. The 17A2 antibody is a widely used phenotypic marker for mouse T cells. In addition, as the CD3e chain within the TCR complex contains intracellular signaling domains, binding of 17A2 antibody to CD3 can induce cell activation (use format suitable for functional assays).

## Applications

## Application Note

\*Optimal dilutions/concentrations should be determined by the researcher.

## Suggested dilution

FCM

## Recommended dilution

Assay dependent

Not tested in other applications.

## Properties

**Form** Liquid

**Buffer** 10mM NaH<sub>2</sub>PO<sub>4</sub>, 150mM NaCl, 0.1% Gelatin

**Preservative** 0.09% Sodium azide

**Storage** Store as concentrated solution. Centrifuge briefly prior to opening vial. Store at 4°C. DO NOT FREEZE. Protect from light.

**Concentration** 0.2 mg/ml (Please refer to the vial label for the specific concentration.)

**Purification** Purified by affinity chromatography  
From tissue culture supernatant

**Conjugation** Phycoerythrin (PE) [Wavelength](#)



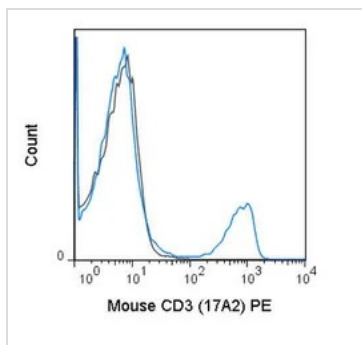
For full product information, images and publications, please visit our [website](#).

For laboratory research use only. Not for any clinical, therapeutic, or diagnostic use in humans or animals. Not for animal or human consumption.

**Note**

Purchasers shall not, and agree not to enable third parties to, analyze, copy, reverse engineer or otherwise attempt to determine the structure or sequence of the product.

## DATA IMAGES

**GTX01458-08 FCM Image**

FACS analysis of mouse C57Bl/6 splenocytes using GTX01458-08 CD3 antibody [17A2] (PE).

Solid line : primary antibody

Dashed line : isotype control

antibody amount : 0.5  $\mu$ g (5  $\mu$ l)



For full product information, images and publications, please visit our [website](#).