

CD3 antibody [Hit3a] (PE)

Cat. No. GTX01459-08

Host	Mouse
Clonality	Monoclonal
Isotype	IgG2a
Applications	FCM
Reactivity	Human, Chimpanzee

References (6)
 Package
 100 test

PRODUCT

Summary

The Hit3a antibody is specific for human CD3e, also known as CD3 epsilon, a 20 kDa subunit of the T cell receptor complex, along with CD3 gamma and CD3 delta. These integral membrane protein chains assemble with additional chains of the T cell receptor (TCR), as well as CD3 zeta chain, to form the T cell receptor – CD3 complex. Together with co-receptors CD4 or CD8, the complex serves to recognize antigens bound to MHC molecules on antigen-presenting cells. These interactions promote T cell receptor signaling (T cell activation), inducing cell proliferation, differentiation, production of cytokines or activation-induced cell death. CD3 is differentially expressed during thymocyte-to-T cell development and on all mature T cells. The Hit3a antibody is a widely used phenotypic marker for human T cells. In addition, binding/cross-linking of Hit3a antibody to CD3e can induce cell activation. The antibody has also been demonstrated to be cross-reactive with Chimpanzee CD3.

Applications

Application Note

*Optimal dilutions/concentrations should be determined by the researcher.

Suggested dilution

Recommended dilution

FCM	0.25 µg (5 µl) for 10 ⁵ -10 ⁸ cells in 100 µl sample per test
-----	---

Not tested in other applications.

Properties

Form	Liquid
-------------	--------

Buffer	10mM NaH ₂ PO ₄ , 150mM NaCl, 0.1% Gelatin
---------------	--

Preservative	0.09% Sodium azide
---------------------	--------------------

Storage	Store as concentrated solution. Centrifuge briefly prior to opening vial. Store at 4°C. DO NOT FREEZE. Protect from light.
----------------	--

Concentration	0.05 mg/ml (Please refer to the vial label for the specific concentration.)
----------------------	---

Purification	Purified by affinity chromatography From tissue culture supernatant
---------------------	--

Conjugation	Phycoerythrin (PE) Wavelength
--------------------	---



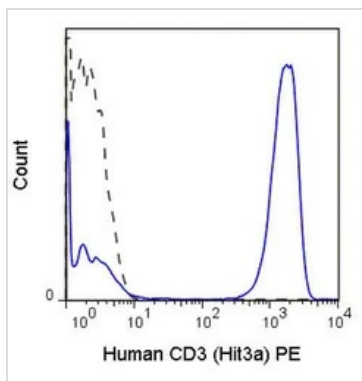
For full product information, images and publications, please visit our [website](#).

For laboratory research use only. Not for any clinical, therapeutic, or diagnostic use in humans or animals. Not for animal or human consumption.

Note

Purchasers shall not, and agree not to enable third parties to, analyze, copy, reverse engineer or otherwise attempt to determine the structure or sequence of the product.

DATA IMAGES

**GTX01459-08 FCM Image**

FACS analysis of human peripheral blood lymphocytes using GTX01459-08 CD3 antibody [Hit3a] (PE).

Solid line : primary antibody

Dashed line : isotype control

antibody amount : 0.25 μ g (5 μ l)



For full product information, images and publications, please visit our [website](#).