

CD3 antibody [SK7] (FITC)

Cat. No. GTX01460-06

| | |
|-------------|-------------------|
| Host | Mouse |
| Clonality | Monoclonal |
| Isotype | IgG1 |
| Application | FACS |
| Reactivity | Human, Chimpanzee |

Reference (5)

Package

100 test

PRODUCT

Summary

The SK7 antibody is specific for human CD3e, also known as CD3 epsilon, a 20 kDa subunit of the T cell receptor complex, along with CD3 gamma and CD3 delta. These integral membrane protein chains assemble with additional chains of the T cell receptor (TCR), as well as CD3 zeta chain, to form the T cell receptor – CD3 complex. Together with co-receptors CD4 or CD8, the complex serves to recognize antigens bound to MHC molecules on antigen-presenting cells. These interactions promote T cell receptor signaling (T cell activation), inducing cell proliferation, differentiation, production of cytokines or activation-induced cell death. CD3 is differentially expressed during thymocyte-to-T cell development and on all mature T cells. The SK7 antibody is a widely used phenotypic marker for human T cells. This antibody may induce T cell activation in the presence of monocytes. The antibody has also been demonstrated to be cross-reactive with Chimpanzee CD3. Binding of clone SK7 can be blocked by an alternative Anti-Human CD3 clone, OKT3.

APPLICATION

Application Note

*Optimal dilutions/concentrations should be determined by the researcher.

| Suggested dilution | Recommended dilution |
|-----------------------------------|--|
| FACS | 1 µg (5 µl) for 10 ⁵ -10 ⁸ cells in 100 µl sample per test |
| Not tested in other applications. | |

PROPERTIES

| | |
|---------------|--|
| Form | Liquid |
| Buffer | 10mM NaH ₂ PO ₄ , 150mM NaCl, 0.1% Gelatin |
| Preservative | 0.09% Sodium azide |
| Storage | Store as concentrated solution. Centrifuge briefly prior to opening vial. Store at 4°C. DO NOT FREEZE. Protect from light. |
| Concentration | 0.2 mg/ml (Please refer to the vial label for the specific concentration.) |
| Purification | Purified by affinity chromatography From tissue culture supernatant |
| Conjugation | Fluorescein isothiocyanate (FITC) |

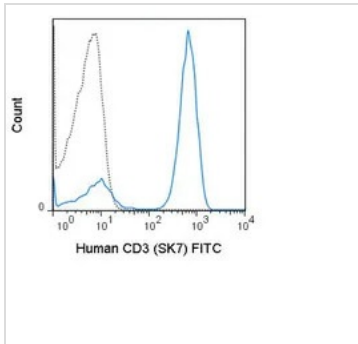


For full product information, images and publications, please visit our [website](#).

For laboratory research use only. Not for any clinical, therapeutic, or diagnostic use in humans or animals. Not for animal or human consumption.

Note

Purchasers shall not, and agree not to enable third parties to, analyze, copy, reverse engineer or otherwise attempt to determine the structure or sequence of the product.

DATA IMAGES

GTx01460-06 FACS Image

FACS analysis of human peripheral blood lymphocytes using GTx01460-06 CD3 antibody [SK7] (FITC).

Solid line : primary antibody

Dashed line : isotype control

antibody amount : 1 μ g (5 μ l)



For full product information, images and publications, please visit our [website](#).