

CD4 antibody [SK3] (FITC)

Cat. No. GTX01461-06

Host	Mouse
Clonality	Monoclonal
Isotype	IgG1
Applications	FCM
Reactivity	Human, Cynomolgus monkey, Rhesus Monkey

References (5)

Package

100 test

PRODUCT

Summary

The SK3 antibody reacts with human CD4, a 59 kDa protein which acts as a co-receptor for the T cell receptor (TCR) in its interaction with MHC Class II molecules on antigen-presenting cells. The extracellular domain of CD4 binds to the beta-2 domain of MHC Class II, while its cytoplasmic tail provides a binding site for the tyrosine kinase lck, facilitating the signaling cascade that initiates T cell activation. CD4, and co-receptors CCR5 and CXCR4, may also be utilized by HIV-1 to enter T cells. Human CD4 is typically expressed on thymocytes, some mature T cell populations such as Th17 and T regulatory (Treg) cells, as well as on dendritic cells. The SK3 antibody is widely used as a phenotypic marker for human CD4 expression, and has been reported to be cross-reactive with Rhesus and Cynomolgus CD4. This antibody does not block binding of alternative clone RPA-T4, suggesting that they recognize different epitopes.

Applications

Application Note

*Optimal dilutions/concentrations should be determined by the researcher.

Suggested dilution

Recommended dilution

FCM	0.06 µg (5 µl) for 10 ⁵ -10 ⁸ cells in 100 µl sample per test
-----	---

Not tested in other applications.

Properties

Form	Liquid
Buffer	10mM NaH ₂ PO ₄ , 150mM NaCl, 0.1% Gelatin
Preservative	0.09% Sodium azide
Storage	Store as concentrated solution. Centrifuge briefly prior to opening vial. Store at 4°C. DO NOT FREEZE. Protect from light.
Concentration	0.012 mg/ml (Please refer to the vial label for the specific concentration.)
Purification	Purified by affinity chromatography From tissue culture supernatant
Conjugation	Fluorescein isothiocyanate (FITC) Wavelength



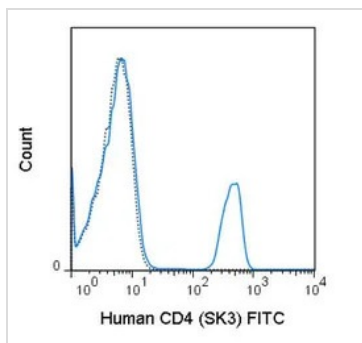
For full product information, images and publications, please visit our [website](#).

For laboratory research use only. Not for any clinical, therapeutic, or diagnostic use in humans or animals. Not for animal or human consumption.

Note

Purchasers shall not, and agree not to enable third parties to, analyze, copy, reverse engineer or otherwise attempt to determine the structure or sequence of the product.

DATA IMAGES

**GTX01461-06 FCM Image**

FACS analysis of human peripheral blood lymphocytes using GTX01461-06 CD4 antibody [SK3] (FITC).

Solid line : primary antibody

Dashed line : isotype control

antibody amount : 0.06 μ g (5 μ l)



For full product information, images and publications, please visit our [website](#).