

## CD4 antibody [SK3] (APC)

Cat. No. GTX01461-07

<b>Host</b>	Mouse
<b>Clonality</b>	Monoclonal
<b>Isotype</b>	IgG1
<b>Applications</b>	FCM
<b>Reactivity</b>	Human, Cynomolgus monkey, Rhesus Monkey

References ( 5 )  
 Package  
 100 test

## PRODUCT

## Summary

The SK3 antibody reacts with human CD4, a 59 kDa protein which acts as a co-receptor for the T cell receptor (TCR) in its interaction with MHC Class II molecules on antigen-presenting cells. The extracellular domain of CD4 binds to the beta-2 domain of MHC Class II, while its cytoplasmic tail provides a binding site for the tyrosine kinase lck, facilitating the signaling cascade that initiates T cell activation. CD4, and co-receptors CCR5 and CXCR4, may also be utilized by HIV-1 to enter T cells. Human CD4 is typically expressed on thymocytes, some mature T cell populations such as Th17 and T regulatory (Treg) cells, as well as on dendritic cells. The SK3 antibody is widely used as a phenotypic marker for human CD4 expression, and has been reported to be cross-reactive with Rhesus and Cynomolgus CD4. This antibody does not block binding of alternative clone RPA-T4, suggesting that they recognize different epitopes.

## Applications

## Application Note

\*Optimal dilutions/concentrations should be determined by the researcher.

## Suggested dilution

## Recommended dilution

FCM	0.06 µg (5 µl) for 10 <sup>5</sup> -10 <sup>8</sup> cells in 100 µl sample per test
-----	---

Not tested in other applications.

## Properties

<b>Form</b>	Liquid
-------------	--------

<b>Buffer</b>	10mM NaH <sub>2</sub> PO <sub>4</sub> , 150mM NaCl, 0.1% Gelatin
---------------	--

<b>Preservative</b>	0.09% Sodium azide
---------------------	--------------------

<b>Storage</b>	Store as concentrated solution. Centrifuge briefly prior to opening vial. Store at 4°C. DO NOT FREEZE. Protect from light.
----------------	--

<b>Concentration</b>	0.012 mg/ml (Please refer to the vial label for the specific concentration.)
----------------------	--

<b>Purification</b>	Purified by affinity chromatography From tissue culture supernatant
---------------------	--

<b>Conjugation</b>	Allophycocyanin (APC) <a href="#">Wavelength</a>
--------------------	--



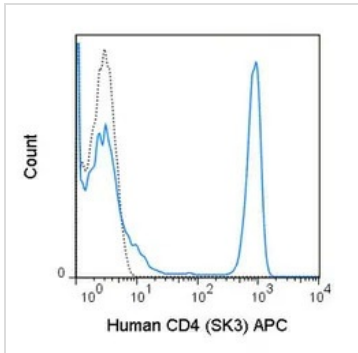
For full product information, images and publications, please visit our [website](#).

For laboratory research use only. Not for any clinical, therapeutic, or diagnostic use in humans or animals. Not for animal or human consumption.

**Note**

Purchasers shall not, and agree not to enable third parties to, analyze, copy, reverse engineer or otherwise attempt to determine the structure or sequence of the product.

## DATA IMAGES

**GTX01461-07 FCM Image**

FACS analysis of human peripheral blood lymphocytes using GTX01461-07 CD4 antibody [SK3] (APC).

Solid line : primary antibody

Dashed line : isotype control

antibody amount : 0.06  $\mu$ g (5  $\mu$ l)



For full product information, images and publications, please visit our [website](#).