

CD45 antibody [2D1] (PerCP-Cy5.5)

Cat. No. GTX01462-11

Host	Mouse
Clonality	Monoclonal
Isotype	IgG1
Applications	FCM
Reactivity	Human

References (4)

Package

100 test

PRODUCT

Summary

The 2D1 antibody reacts with human CD45, one of the most abundant hematopoietic markers and one that is expressed on all leukocytes (the Leukocyte Common Antigen, LCA). CD45 is a protein tyrosine phosphatase existing in several isoforms, each being generated and expressed in cell-specific patterns. With its broad cell distribution, CD45 is critical for many leukocyte functions, regulating signal transduction and cell activation associated with the T cell receptor, B cell receptor, and IL-2 receptor. Other forms of CD45, with restricted cellular expression, include CD45R (B220), CD45RA, CD45RB, and CD45RO. The 2D1 antibody is widely used as a marker for human CD45 expression on peripheral blood T cells, B cells, monocytes, macrophages, and NK cells.

Applications

Application Note

*Optimal dilutions/concentrations should be determined by the researcher.

Suggested dilution

Recommended dilution

FCM	0.125 µg (5 µl) for 10 ⁵ -10 ⁸ cells in 100 µl sample per test
-----	--

Not tested in other applications.

Properties

Form	Liquid
-------------	--------

Buffer	10mM NaH ₂ PO ₄ , 150mM NaCl, 0.1% Gelatin
---------------	--

Preservative	0.09% Sodium azide
---------------------	--------------------

Storage	Store as concentrated solution. Centrifuge briefly prior to opening vial. Store at 4°C. DO NOT FREEZE. Protect from light.
----------------	--

Concentration	0.025 mg/ml (Please refer to the vial label for the specific concentration.)
----------------------	--

Purification	Purified by affinity chromatography From tissue culture supernatant
---------------------	--

Conjugation	Peridinin-chlorophyll proteins-Cyanine5.5 (PerCP-Cy5.5) Wavelength
--------------------	--

Note

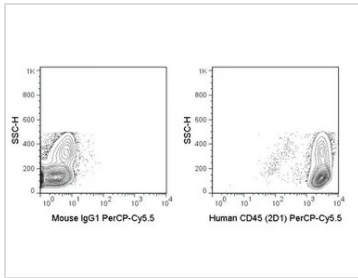
For laboratory research use only. Not for any clinical, therapeutic, or diagnostic use in humans or animals. Not for animal or human consumption.

Purchasers shall not, and agree not to enable third parties to, analyze, copy, reverse engineer or otherwise attempt to determine the structure or sequence of the product.



For full product information, images and publications, please visit our [website](#).

DATA IMAGES

**GTX01462-11 FCM Image**

FACS analysis of human PBMCs using GTX01462-11 CD45 antibody [2D1] (PerCP-Cy5.5).

Right panel : primary antibody

Left panel : isotype control

antibody amount : 0.125 μ g (5 μ l)



For full product information, images and publications, please visit our [website](#).