

CD45.1 antibody [A20] (PE)

Cat. No. GTX01463-08

Host	Mouse
Clonality	Monoclonal
Isotype	IgG2a
Applications	FCM
Reactivity	Mouse

References (4)

Package

100 µg

PRODUCT

Summary

The A20 antibody reacts with mouse CD45.1, also known as Ly5.1, which is a strain-specific allelic form of the CD45 Leukocyte Common Antigen (LCA). Functionally, CD45 is a protein tyrosine phosphatase whose broad cell distribution supports a critical role in many leukocyte functions, including regulation of signal transduction and cell activation associated with the T cell and B cell receptors. The A20 antibody is typically used as a leukocyte marker in Ly5.1 mouse strains: SJL/J, DA, STS/A and RIII. The antibody has been demonstrated to be specific for CD45.1 and is not cross-reactive with CD45.2 bearing cells.

Applications

Application Note

*Optimal dilutions/concentrations should be determined by the researcher.

Suggested dilution

Recommended dilution

FCM

Assay dependent

Not tested in other applications.

Properties

Form Liquid

Buffer 10mM NaH₂PO₄, 150mM NaCl, 0.1% Gelatin

Preservative 0.09% Sodium azide

Storage Store as concentrated solution. Centrifuge briefly prior to opening vial. Store at 4°C. DO NOT FREEZE. Protect from light.

Concentration 0.2 mg/ml (Please refer to the vial label for the specific concentration.)

Purification Purified by affinity chromatography
From tissue culture supernatant

Conjugation Phycoerythrin (PE) [Wavelength](#)

Note

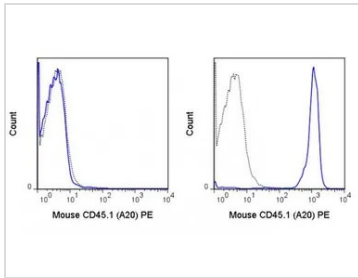
For laboratory research use only. Not for any clinical, therapeutic, or diagnostic use in humans or animals. Not for animal or human consumption.

Purchasers shall not, and agree not to enable third parties to, analyze, copy, reverse engineer or otherwise attempt to determine the structure or sequence of the product.



For full product information, images and publications, please visit our [website](#).

DATA IMAGES

**GTX01463-08 FCM Image**

FACS analysis of mouse C57Bl/6 (left panel) or SJL (right panel) splenocytes using GTX01463-08 CD45.1 antibody [A20] (PE).

Solid line : primary antibody

Dashed line : isotype control

antibody amount : 0.5 μ g (5 μ l)



For full product information, images and publications, please visit our [website](#).